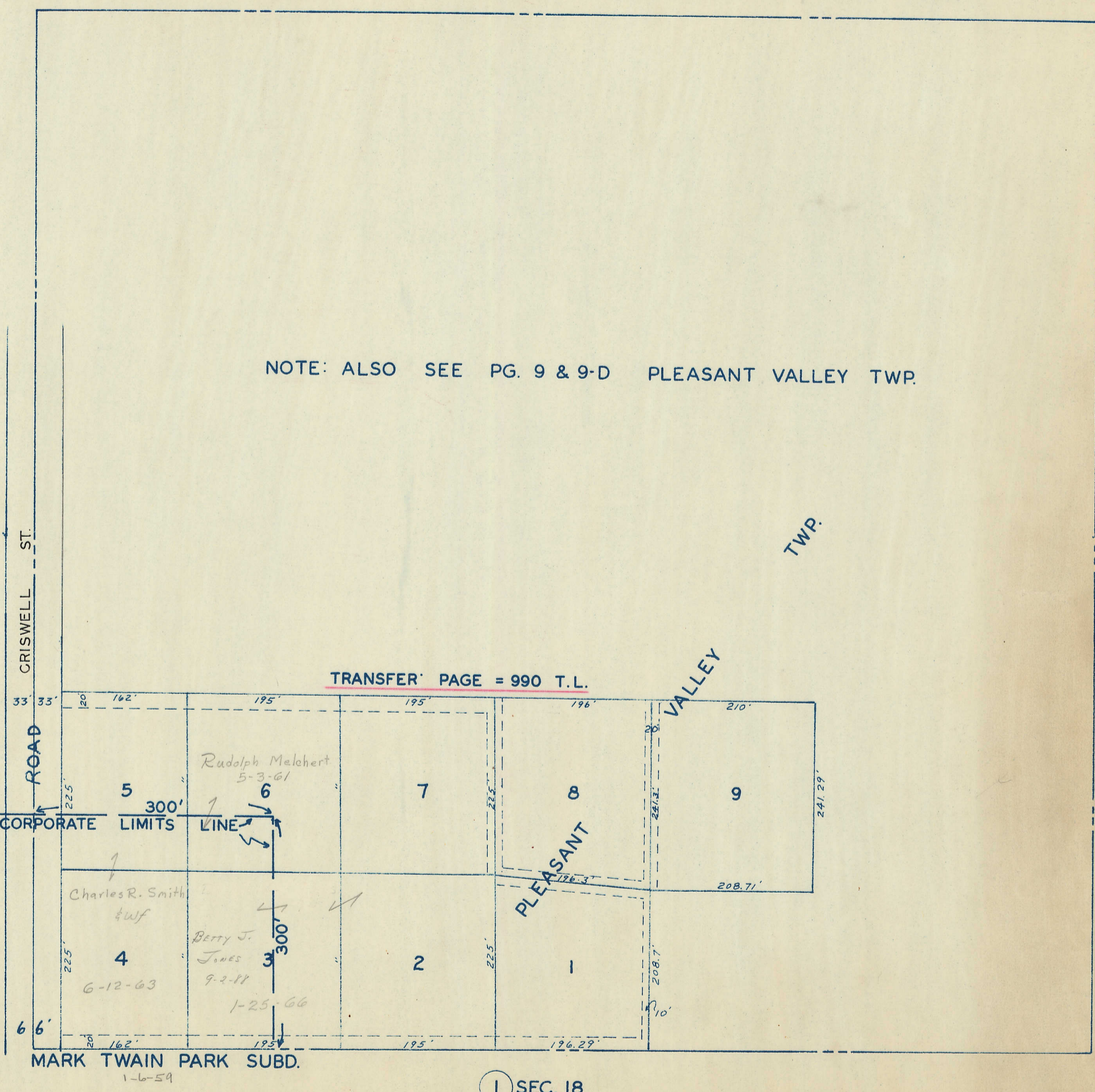


Transfer Page 372 LD
for P.V. TWP.

NOTE: ALSO SEE PG. 9 & 9-D PLEASANT VALLEY TWP.

55 SEC. 12



CRISWELL ST.

CORPORATE LIMITS LINE

TRANSFER PAGE = 990 T.L.

TWP.

VALLEY

PLEASANT

MARK TWAIN PARK SUBD.
1-6-59

1 SEC. 18