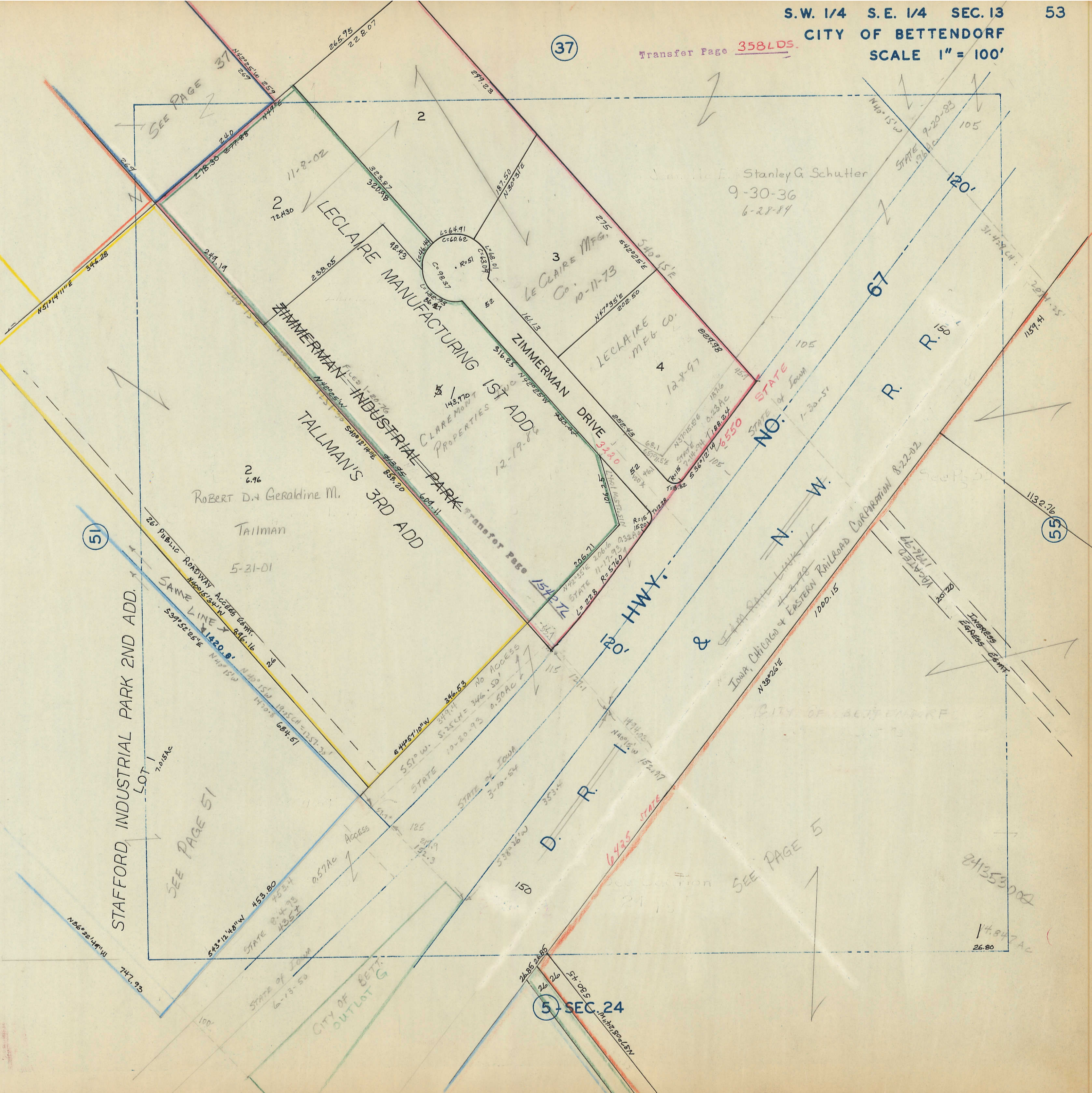


Transfer Page 358LDS.

(37)



(51)

(55)

(5) SEC 24

STAFFORD INDUSTRIAL PARK 2ND ADD.

STAFFORD INDUSTRIAL PARK 3RD ADD.

CITY OF BETTENDORF
OUTLOT G

SEE PAGE 51

SEE PAGE 5

SEE PAGE 37

LECLAIRE MANUFACTURING

ZIMMERMAN INDUSTRIAL PARK

TALLMAN'S 3RD ADD

ZIMMERMAN DRIVE

LECLAIRE MFG. CO.

LECLAIRE MFG. CO.

CLARE MOUNT PROPERTIES

STATE OF IOWA

STATE OF IOWA

STATE OF IOWA

STATE OF IOWA

STATE OF IOWA

STATE OF IOWA

STATE OF IOWA

STATE NO.

STATE NO.

STATE NO.

STATE NO.

STATE NO.

STATE NO.

STATE NO.

STATE NO.

STATE NO.

N. W.

N. W.

N. W.

N. W.

N. W.

N. W.

N. W.

N. W.

N. W.

N. W.

HWY.

HWY.

HWY.

HWY.

HWY.

HWY.

HWY.

HWY.

HWY.

D. R.

D. R.

D. R.

D. R.

D. R.

D. R.

D. R.

D. R.

R.

R.

R.

R.

R.

R.

R.

R.

R.

R.

R.

R.

STATE

STATE

STATE

STATE

STATE

STATE

STATE

STATE

STATE

STATE

STATE

STATE

STATE

STATE

STATE

STATE

STATE

STATE

STATE

STATE

STATE

STATE

STATE

STATE

STATE

STATE

STATE

STATE

STATE

STATE

STATE

STATE

STATE

STATE

STATE

STATE

STATE

STATE

STATE

STATE

STATE

STATE

STATE

STATE

STATE

STATE

STATE

STATE

STATE

STATE

STATE

STATE

STATE

STATE

STATE

STATE

STATE

STATE

STATE

STATE

STATE

STATE

STATE

STATE

STATE

STATE

STATE

STATE

STATE

STATE

STATE

STATE

STATE

STATE

STATE

STATE

STATE

STATE

STATE

STATE

STATE

STATE

STATE

STATE

ROBERT D. & Geraldine M. Tallman
5-21-01

Stanley G. Schutter
9-30-36
6-28-19

241353002

14.847 Ac

26.80

204.25

1157.41

1132.76

1132.76

1132.76

1132.76

1132.76

1132.76

1132.76

1132.76

1132.76

1132.76

1132.76

1132.76

1132.76

1132.76

1132.76

1132.76

1132.76

7.018 AC

7.018 AC

7.018 AC

7.018 AC

7.018 AC

7.018 AC

7.018 AC

7.018 AC

7.018 AC

0.57 AC

0.57 AC

0.57 AC

0.57 AC

0.57 AC

0.57 AC

0.57 AC

0.57 AC

0.57 AC

0.57 AC

0.57 AC

0.57 AC

0.57 AC

0.57 AC

0.57 AC

0.57 AC

0.57 AC

0.57 AC

0.57 AC

0.57 AC

0.57 AC

0.57 AC

0.57 AC

0.57 AC

0.57 AC

0.57 AC

0.57 AC

0.57 AC

0.57 AC

0.57 AC

0.57 AC

0.57 AC

0.57 AC

0.57 AC

0.57 AC

0.57 AC

0.57 AC

0.57 AC

0.57 AC

0.57 AC

0.57 AC

0.57 AC

0.57 AC

0.57 AC

0.57 AC

0.57 AC

0.57 AC

0.57 AC

0.57 AC

0.57 AC

0.57 AC

0.57 AC

0.57 AC

0.57 AC

0.57 AC

0.57 AC

0.57 AC

0.57 AC

0.57 AC

0.57 AC

0.57 AC

0.57 AC

0.57 AC

0.57 AC

0.57 AC

0.57 AC

0.57 AC

0.57 AC

0.57 AC

0.57 AC

0.57 AC

0.57 AC

0.57 AC

0.57 AC

0.57 AC

0.57 AC

0.57 AC

0.57 AC

0.57 AC

0.57 AC

0.57 AC

0.57 AC

0.57 AC

0.57 AC

0.57 AC

0.57 AC

0.57 AC

0.57 AC

0.57 AC

0.57 AC

0.57 AC

0.57 AC

0.57 AC

0.57 AC

0.57 AC

0.57 AC

0.57 AC

0.57 AC

0.57 AC

0.57 AC

0.57 AC

0.57 AC

0.57 AC

0.57 AC

0.57 AC

0.57 AC

0.57 AC

0.57 AC

0.57 AC

0.57 AC

0.57 AC

0.57 AC

0.57 AC

0.57 AC

0.57 AC

0.57 AC

0.57 AC

0.57 AC

0.57 AC

0.57 AC

0.57 AC

0.57 AC

0.57 AC

0.57 AC

0.57 AC

0.57 AC

0.57 AC