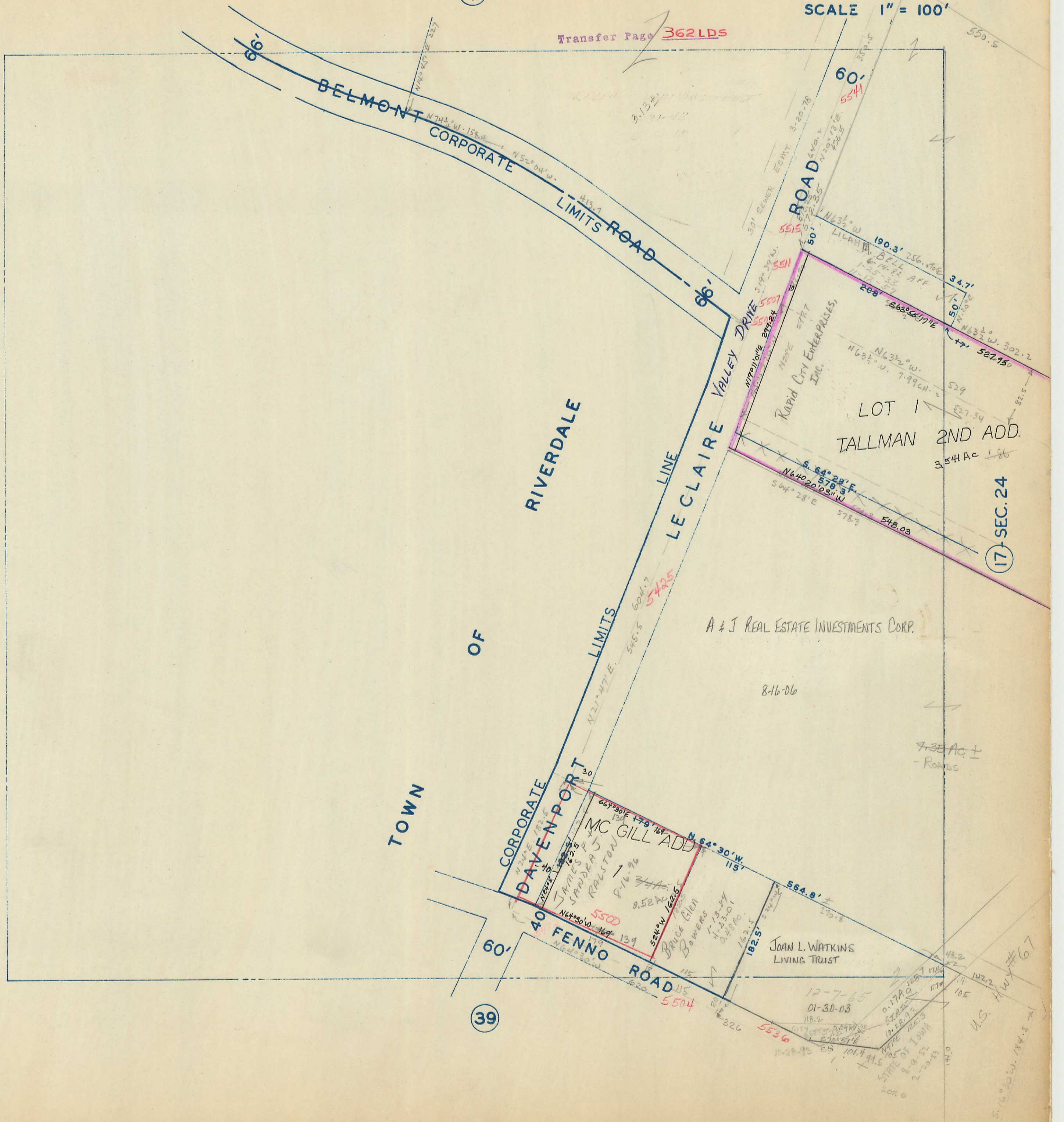


Transfer Page 362 LDS

21 SEC. 23
TOWN OF RIVERDALE



TOWN

OF

RIVERDALE

LIMITS

LE CLAIRE VALLEY DRIVE

BELMONT CORPORATE LIMITS ROAD

CORPORATE DAVENPORT CORPORATE LIMITS

FENNO ROAD

LOT 1 TALLMAN 2ND ADD. 3.54 AC ±

A & J REAL ESTATE INVESTMENTS CORP. 8-16-06

MC GILL ADD

JOAN L. WATKINS LIVING TRUST

7.35 AC ± - Roads

39

17 SEC. 24

U.S. HWY #67