

Blank Lots
R.M. LTD
9-5-91

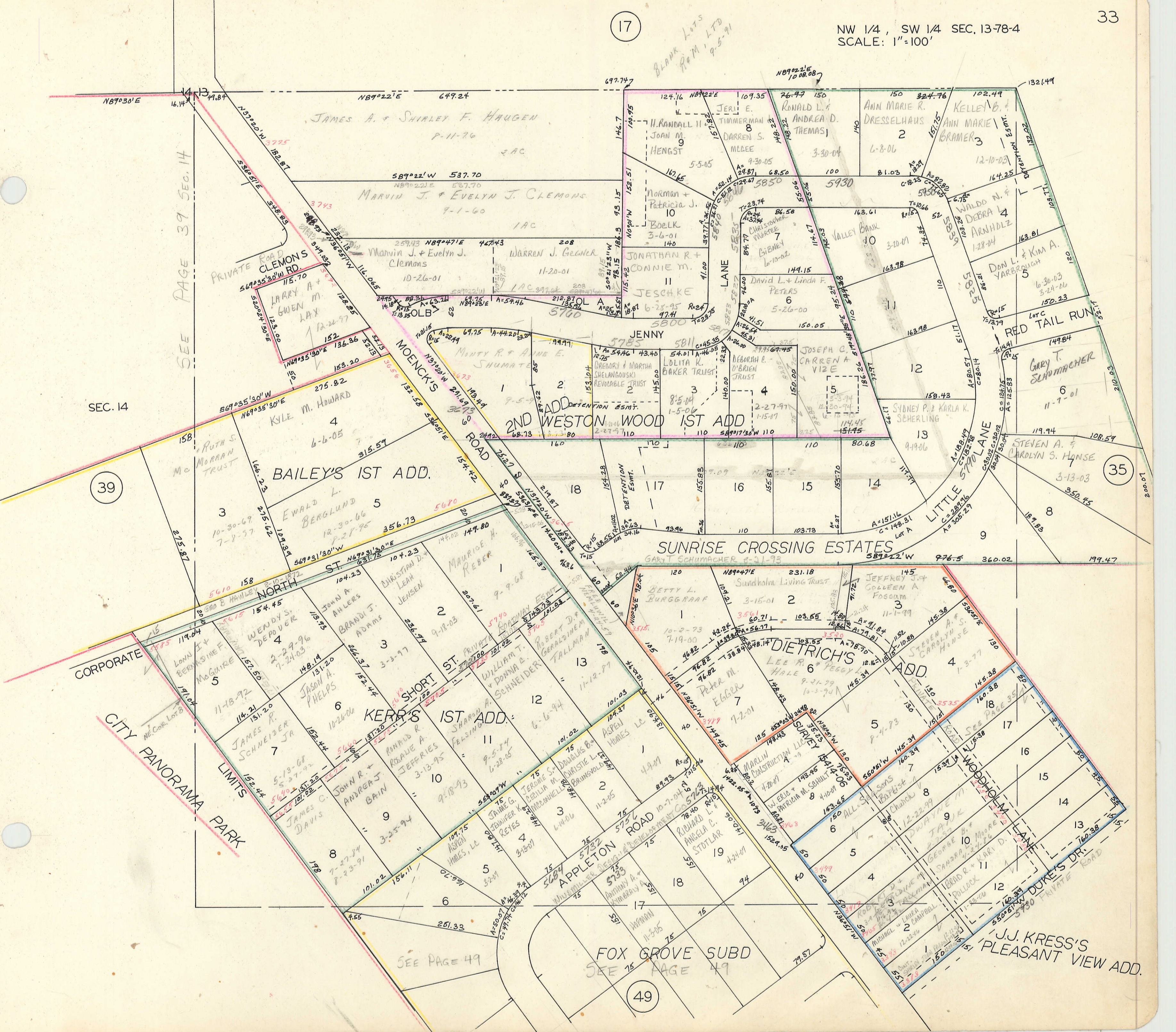
SEE PAGE 39 SEC. 14

SEC. 14

39

35

49



PRIVATE ROAD CLEMONS

MOENCK'S ROAD

CORPORATE ROAD

CITY PANORAMA PARK

FOX GROVE SUBD

J.J. KRESS'S PLEASANT VIEW ADD.

SUNRISE CROSSING ESTATES

DIETRICH'S ADD

KERR'S 1ST ADD.

BAILEY'S 1ST ADD.

MOENCK'S ROAD

CORPORATE ROAD

LITTLE ST. ROAD

APPLETON ROAD

WOODHOLM ROAD

DUKE'S DR.

JAMES A. & SHIRLEY F. HAUGEN
P-11-76

MARVIN J. & EVELYN J. CLEMONS
9-1-60

MARVIN J. & EVELYN J. CLEMONS
10-26-01

WARREN J. GAGNER
11-20-01

JONATHAN R. & CONNIE M. JESCHKE
3-6-01

JENNY

JOSEPH C. CARREN A. VIZE

KYLE M. HOWARD
6-6-05

ERWALD L. BERGLUND
12-30-66

MAURICE H. REBER
9-9-68

RUTH S. MORRAN TRUST

WENDY S. DEPOVER
7-24-03

BRANDT J. ADAMS
3-3-97

JAMES R. SCHNEIDER JR.
10-28-06

JOHN R. & ANDREA S. BAIN
3-35-94

JAMES C. DAVIS
7-27-84

ASPHEN HANES, LL
8-23-91

CHRISTIAN D. LEAH JENSEN
9-18-03

WILLIAM T. & DONNA E. SCHNEIDER
11-12-97

SHARON A. FELSING
6-6-94

ANNAD R. ROAUME A. JEFFRIES
3-13-95

JOHN R. & ANDREA S. BAIN
3-35-94

JAMES C. DAVIS
7-27-84

ASPHEN HANES, LL
8-23-91

DEBORAH E. O'BRIEN TRUST

LOLITA K. BAKER TRUST

DETENTION ESMT.

DETENTION ESMT.

DETENTION ESMT.

DETENTION ESMT.

DETENTION ESMT.

DETENTION ESMT.

DETENTION ESMT.

DETENTION ESMT.

DETENTION ESMT.

DETENTION ESMT.

DETENTION ESMT.

DETENTION ESMT.

DETENTION ESMT.