

LOT 1

19

33

LOT 2

RIVERSIDE INDUSTRIAL PARK

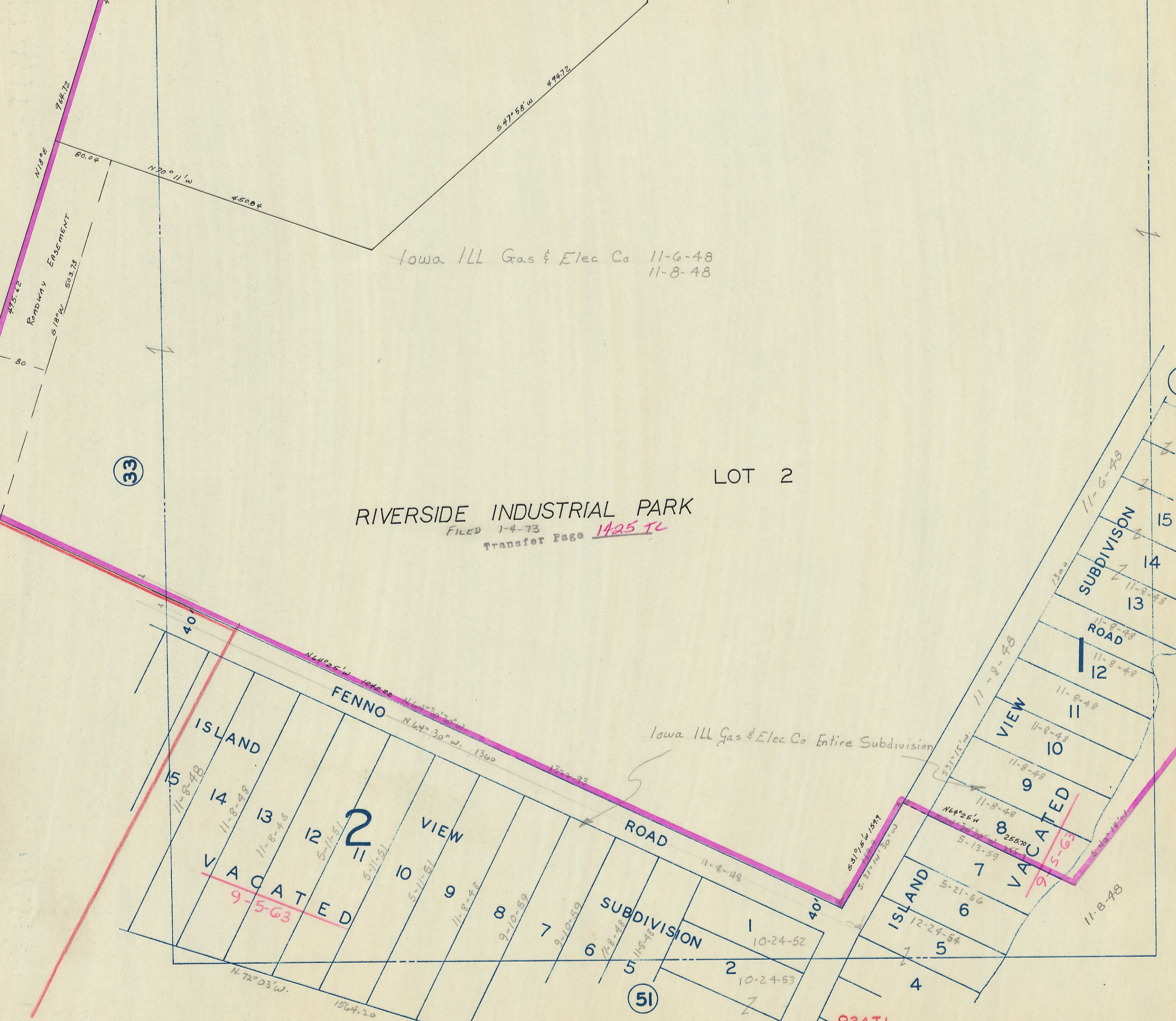
FILED 1-4-73  
Transfer Page 1425 TL

Iowa Ill Gas & Elec Co Entire Subdivision

Transfer Page 834 TL

37

51



475.42  
RANDOMLY EASEMENT  
518°W 503.73

1564.20  
N 72° 03' W

1564.20  
N 72° 03' W

537° 59' 42" W 1588.8  
MISSISSIPPI RIVER