

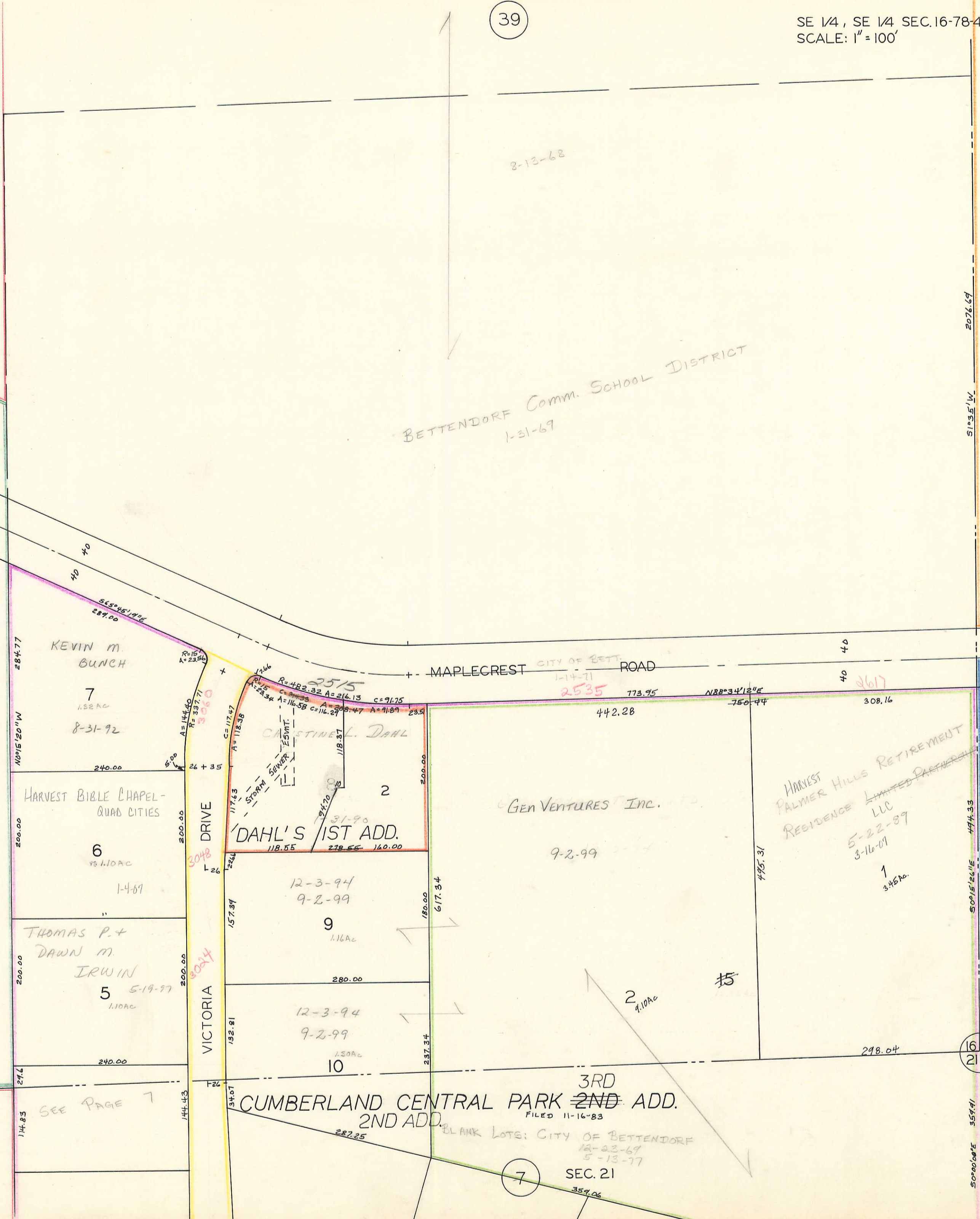
39

BETTENDORF Comm. SCHOOL DISTRICT
1-31-69

SEC. 15

49

53



KEVIN M. BUNCH

7

1.32 AC

8-31-92

HARVEST BIBLE CHAPEL-
QUAD CITIES

6

1.10 AC

1-4-01

THOMAS P. &
DAWN M.
IRWIN

5

1.10 AC

5-19-97

DAHL'S 1ST ADD.

2

GEN VENTURES INC.

9-2-99

HARVEST PALMER HILLS RETIREMENT
RESIDENCE LIMITED PARTNERSHIP
LLC

5-22-89
3-16-01

1
3-15-00

CUMBERLAND CENTRAL PARK 2ND ADD.

FILED 11-16-83

BLANK LOTS: CITY OF BETTENDORF
12-23-69
5-13-77

SEC. 21

7

SEE PAGE 7

8-13-68

2076.69

51°35'14"

40

40

40

40

40

40

40

40

40

40

40

40

40

40

40

40

40

40

40

40

40

40

50°15'26" E

1615
2122

50°00'00" E

55741

55741