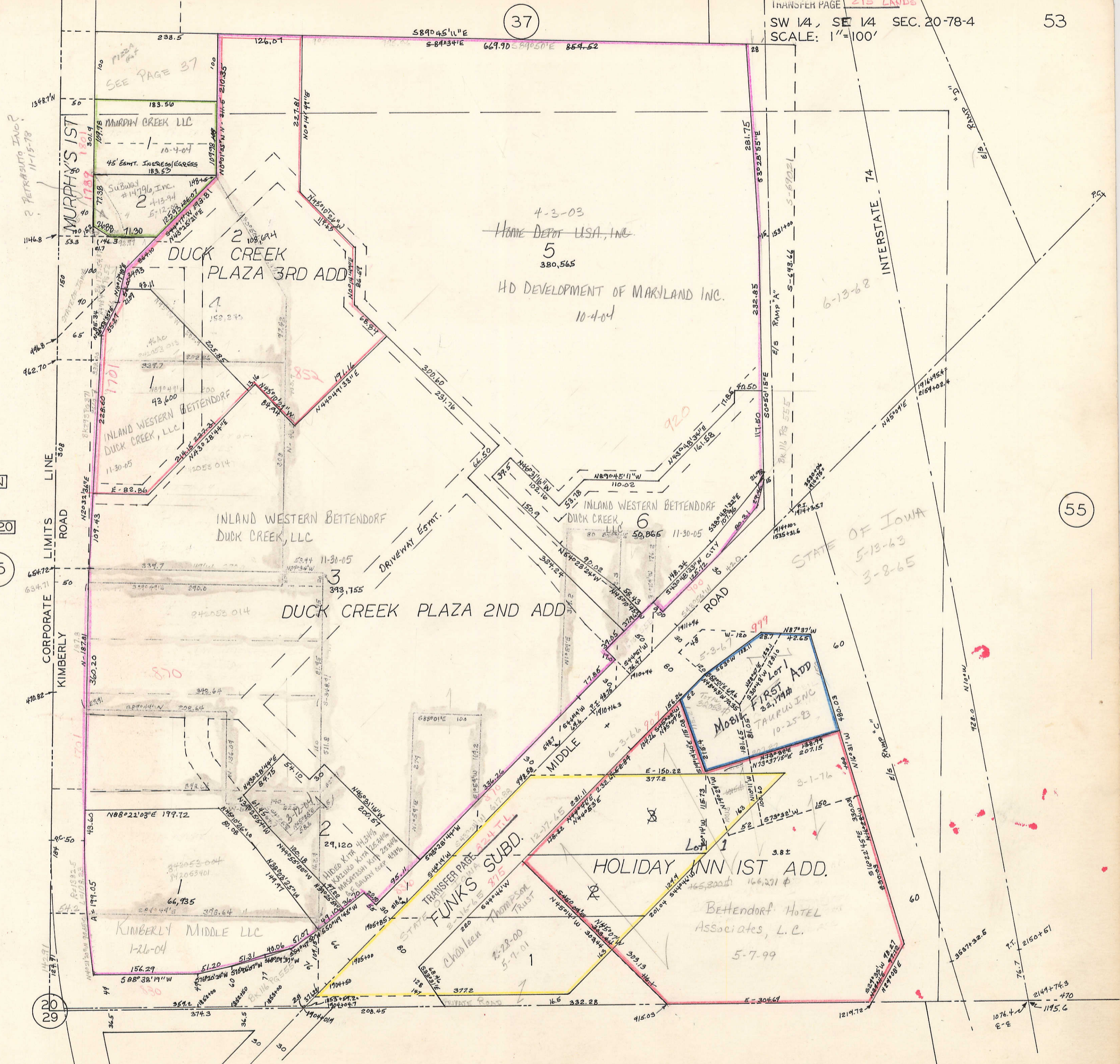


37



VOL. N

SEC. 20

15

55

5 VOL. A SEC. 29

6

STATE OF IOWA  
5-13-63  
3-8-65

2 PETRABUTO INC?  
11-15-78

SEE PAGE 37

4-3-03  
HOME DEPOT USA, INC.  
5  
380,565  
HD DEVELOPMENT OF MARYLAND INC.  
10-4-04

6-13-68

920

999

TRANSFER PAGE 224 T.L.  
STATE OF IOWA  
2-15-65 715  
Chonleen THOMPSON TRUST  
2-28-00  
5-7-01

BETTENDORF HOTEL  
Associates, L.C.  
5-7-99

KIMBERLY MIDDLE LLC  
1-26-04

MURPHY'S 1ST

DUCK CREEK PLAZA 3RD ADD

DUCK CREEK PLAZA 2ND ADD

HOLIDAY INN 1ST ADD.

INTERSTATE 74

CORPORATE LIMITS ROAD  
KIMBERLY

DRIVEWAY ESMT.

MIDDLE ROAD

RAMP 'C'

RAMP 'B'

RAMP 'A'

RAMP 'C'

20  
29

1076.4  
1195.6  
E-E

2150+51  
76.7

3537+32.5

1219.72

3300.0

150

50.0

480.0

115.0

50.0

115.0

42.0

30

42.0

30

42.0

30

42.0

30

42.0

30

42.0

30

42.0

30

42.0

30

42.0

30

42.0