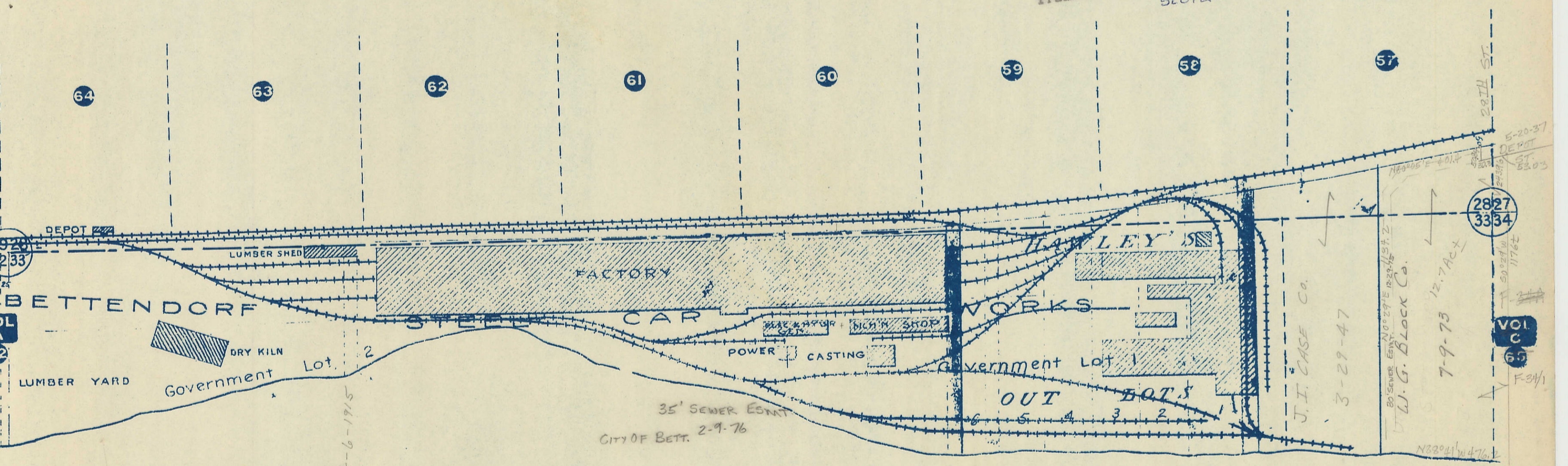


M = 300' ±
1" = 330' ±

Transfer Page 217 LANDS
SEC. 28



MISSISSIPPI

Transfer Page 221 LANDS
SEC. 33
RIVER

2827
3334

VOL
C
65

W.G. Block Co.
7-9-73 12.7 Ac ±

J.I. CASE Co.
3-29-47

35' SEWER Easmt
CITY OF BETT. 2-9-76

4-6-1915

Lot 2

Government

LUMBER YARD

BETTENDORF

FACTORY

STEEL CAR

WORKS

Government Lot 1

OUT Easmt

N82°41'W 476.1'

28TH ST.

5-20-37
DEPOT
ST.
5203