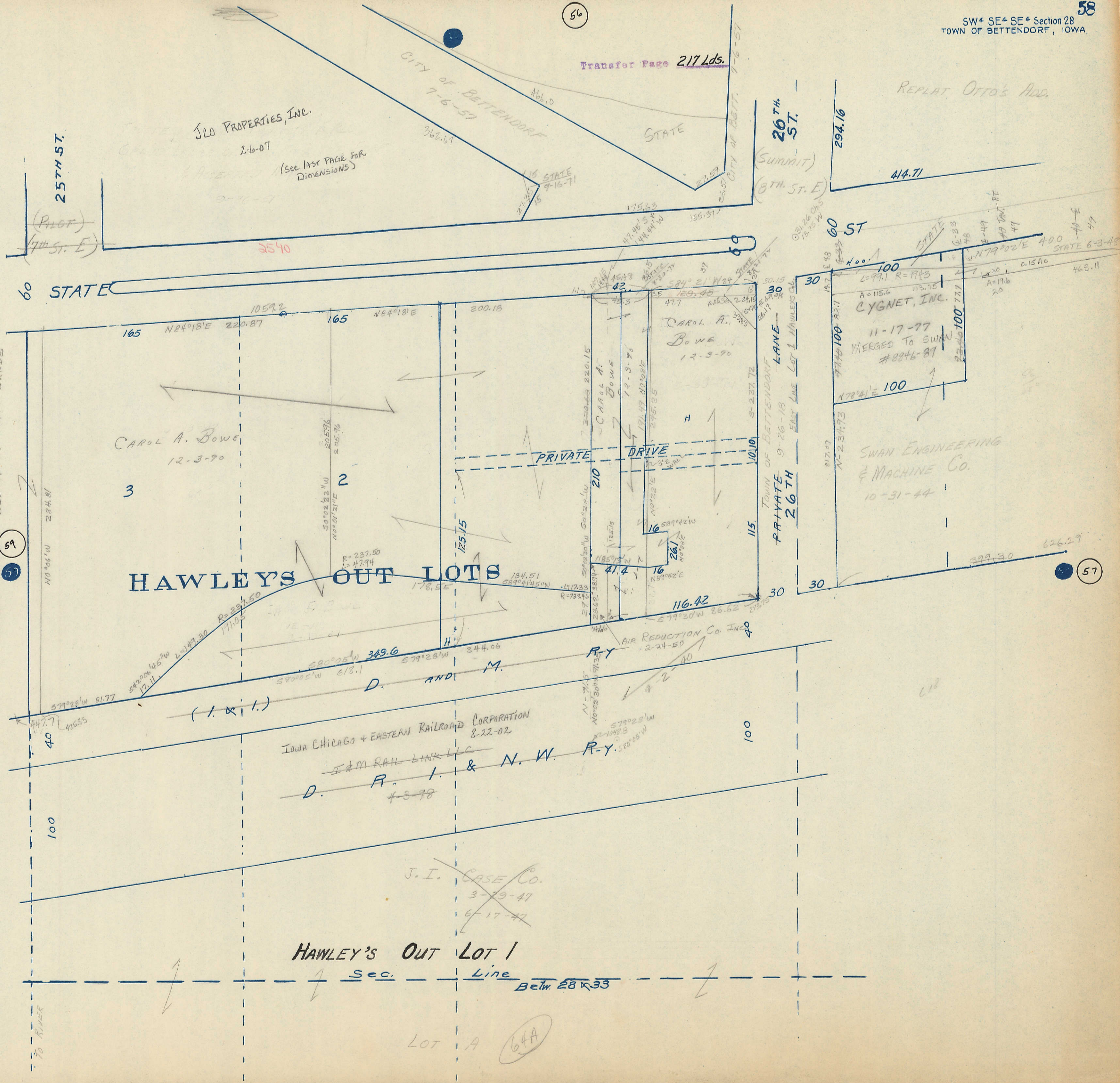


Transfer Page 217 Lds.



JCO PROPERTIES, INC.
2-6-07

(See last PAGE FOR DIMENSIONS)

257th ST.

26th ST.

60 STATE

60 ST

CAROL A. BOWE
12-3-90

CAROL A. BOWE
12-3-90

CYGNET, INC.
11-17-77
MERGED TO SWAN
#2246-87

SWAN ENGINEERING
& MACHINE CO.
10-31-44

HAWLEY'S OUT LOTS

IOWA CHICAGO + EASTERN RAILROAD CORPORATION
8-22-02

I & M RAIL LINK LLC
D. I. & N. W. R-Y.

HAWLEY'S OUT LOT 1

Sec. Line
Betw. 28 & 33

LOT A (64A)

Transfer Page 80 TL
HAWLEY OUTLOTS - SEE ALSO 217 LANDS

69

57

57

TO RIVER