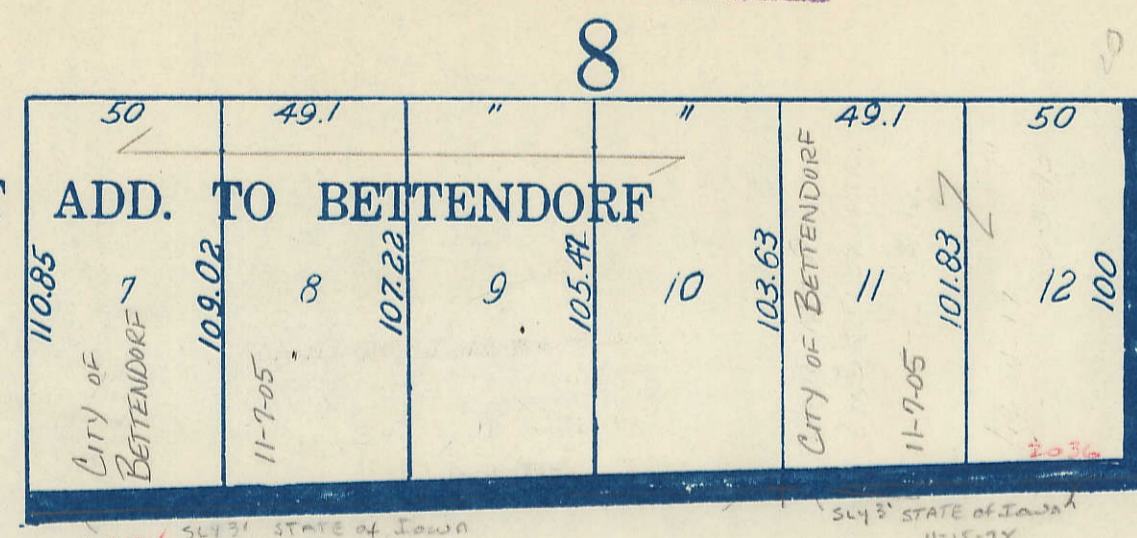
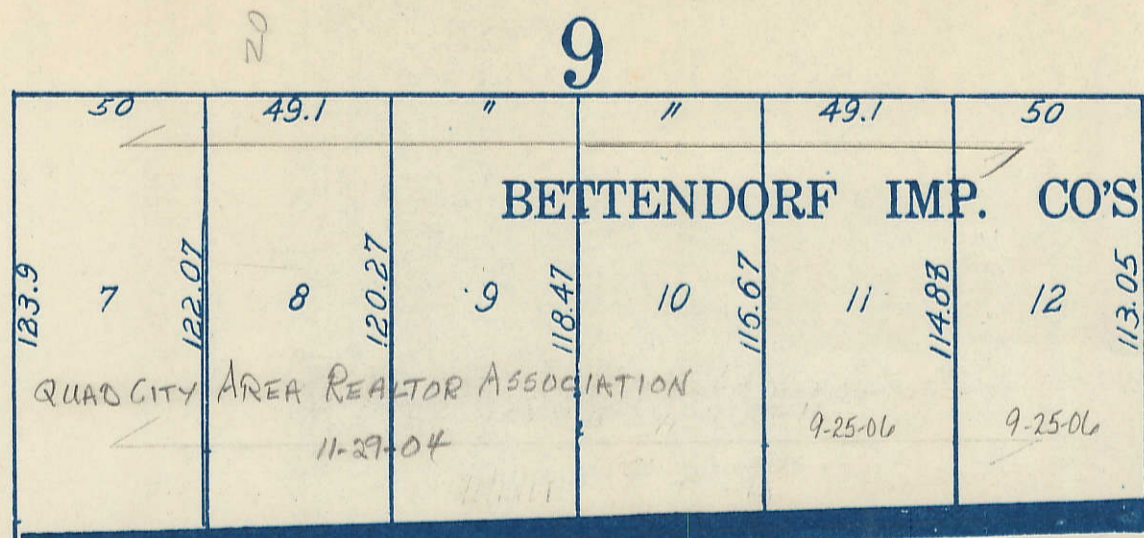


Transfer Page 46

Transfer Page 45



19TH ST.

20TH ST.

21ST ST.

60

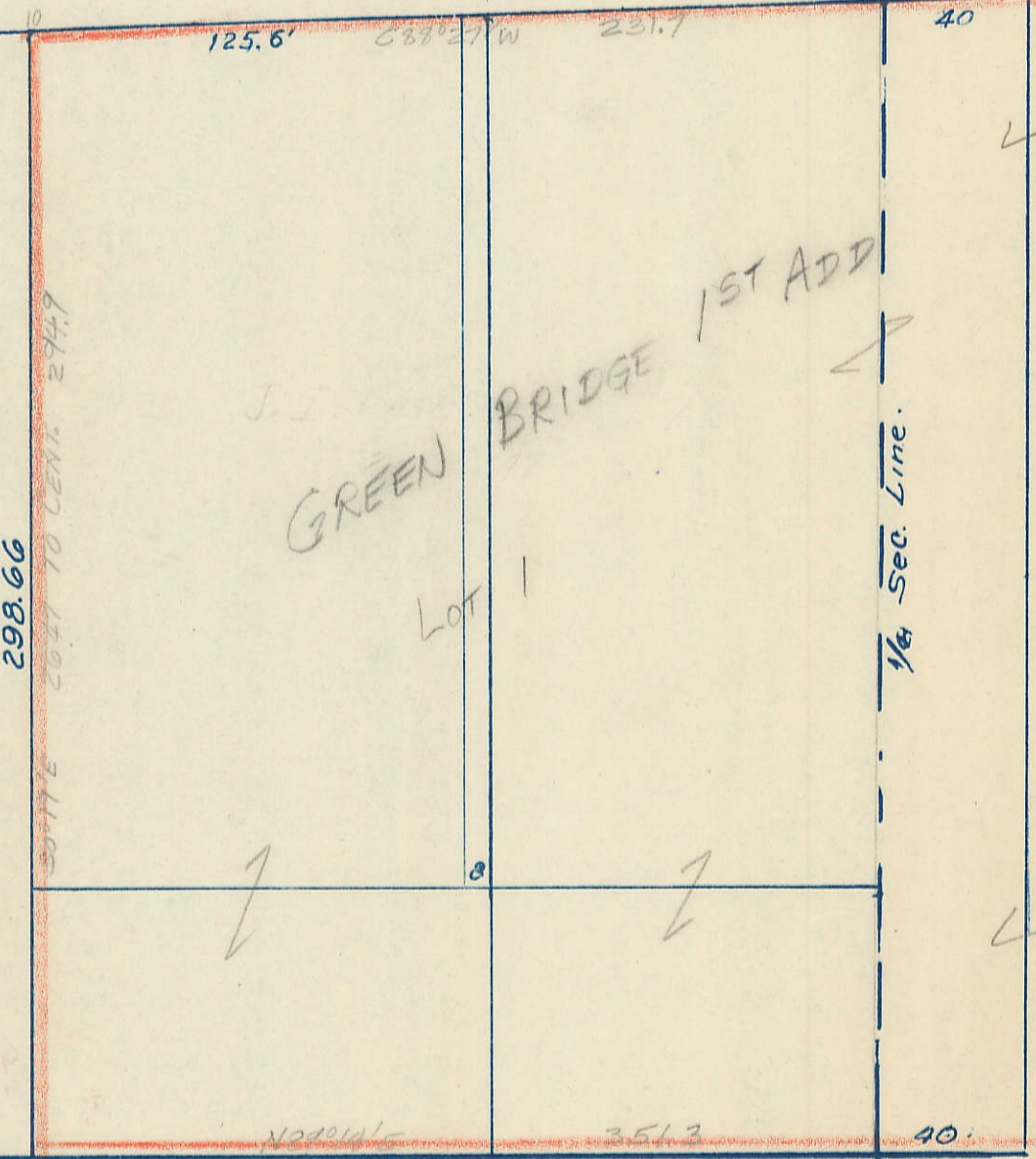
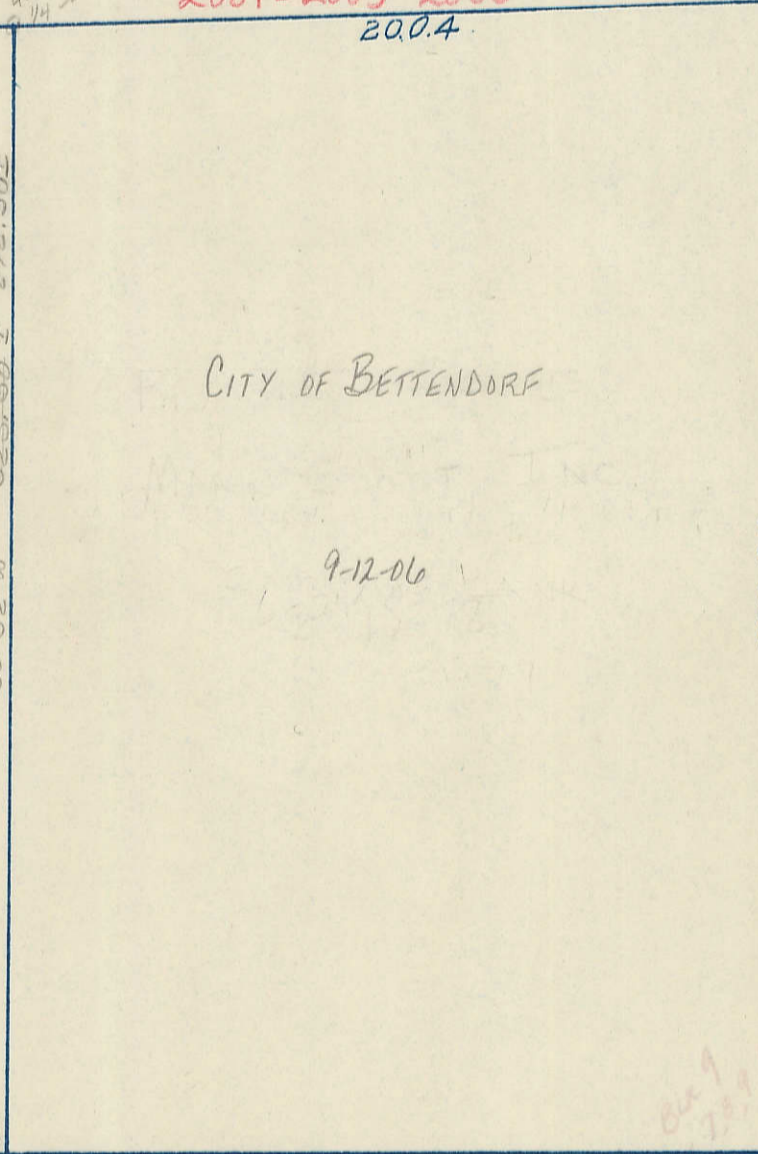
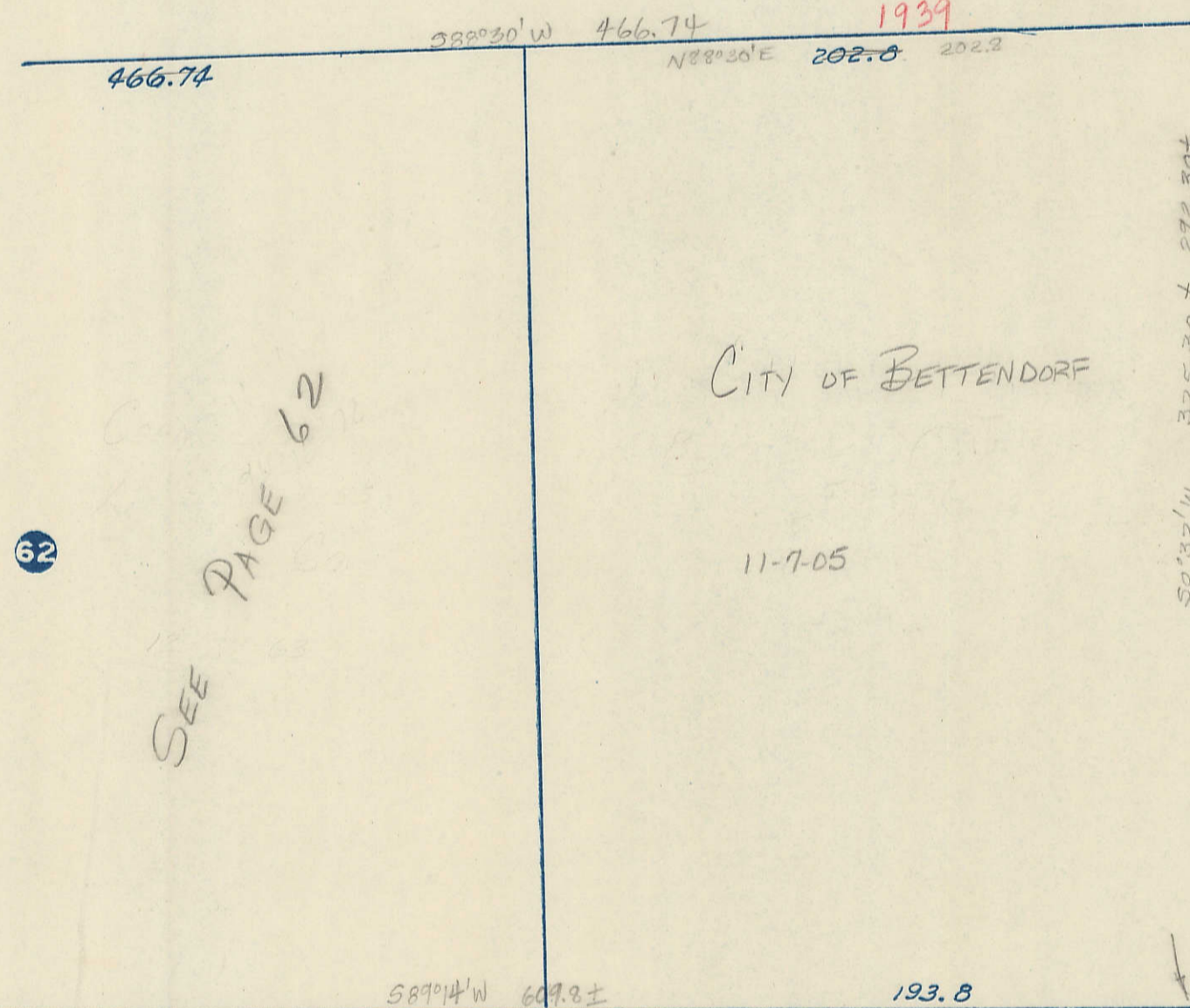
60

33

N88°30'E

610± + STATE 202.8

ST. 236.1' W



SEE PAGE 62

62

Transfer Page 217 Lds.

40

(1. & 1.)

DAVENPORT & MUSCATINE RY.

40

IOWA CHICAGO & EASTERN RAILROAD CORPORATION  
 8-22-02  
 I&M RAIL LINK LLC  
 DAVENPORT ROCK ISLAND & NORTH WESTERN R. R.  
 4-3-78

4-2-90

100

N87°14'E

64A