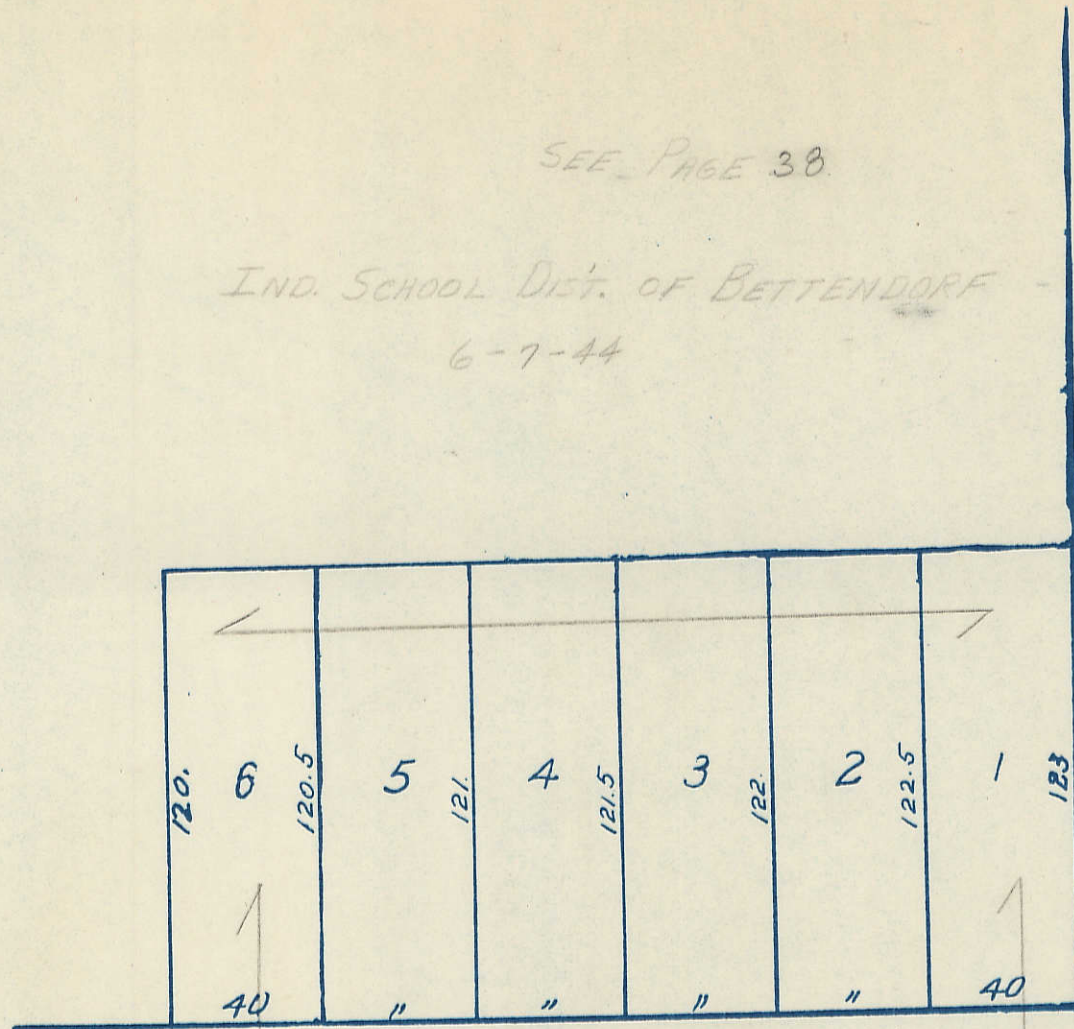


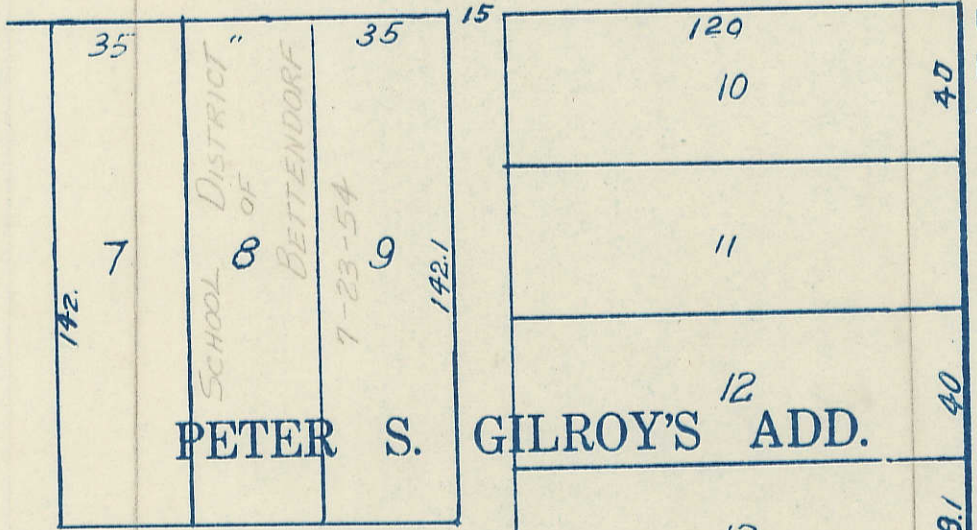
Transfer Page 50

SEE PAGE 38

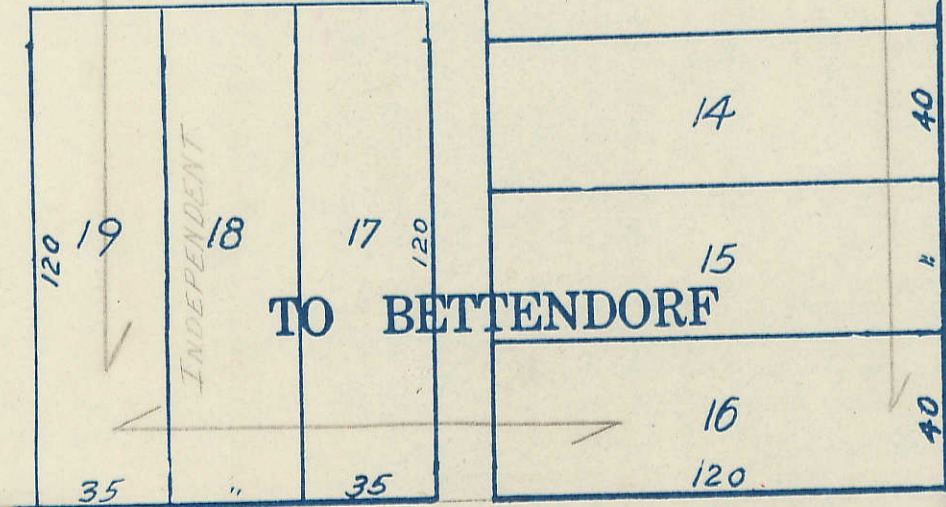
IND. SCHOOL DIST. OF BETTENDORF
6-7-44



HAZEL ST.

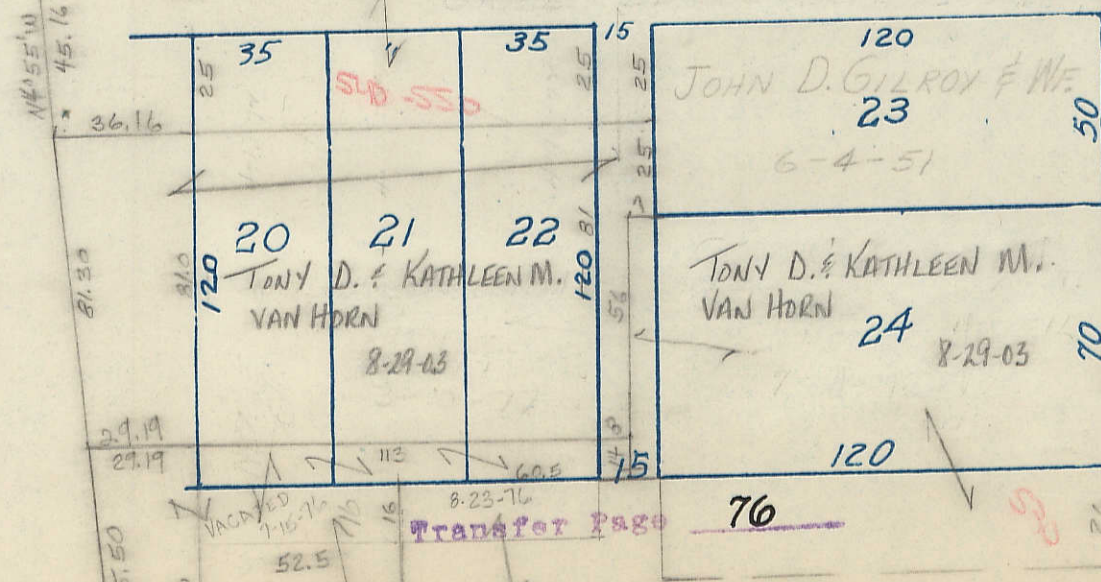


PETER S. GILROY'S ADD.

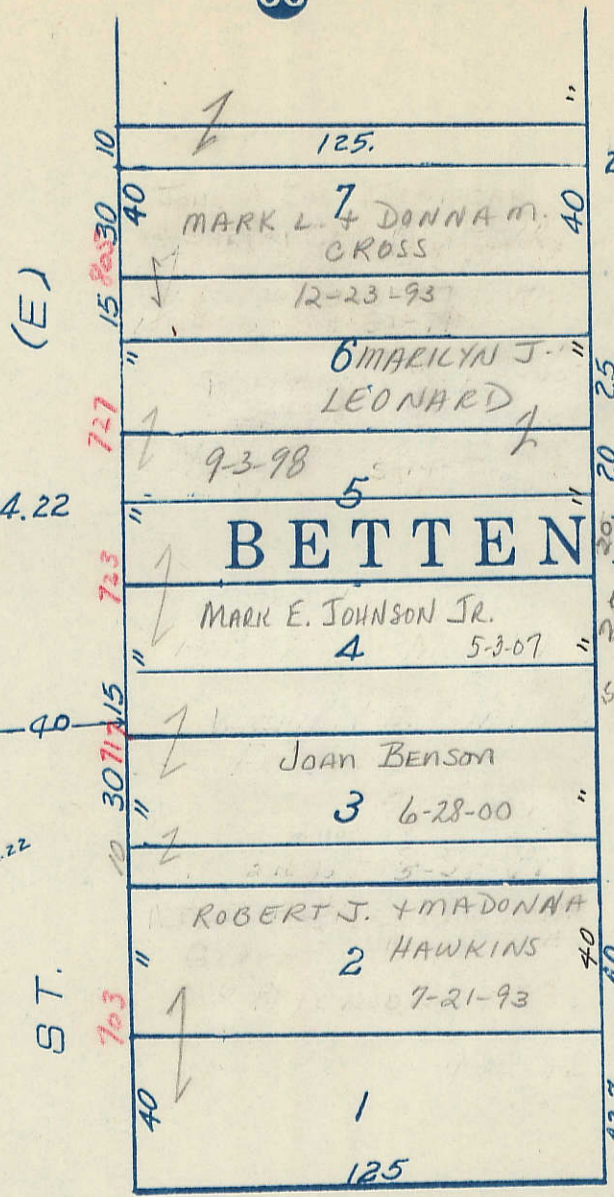


TO BETTENDORF

CHERRY ST.
FRANK J. & LINDA C. MURPHY 4-29-05

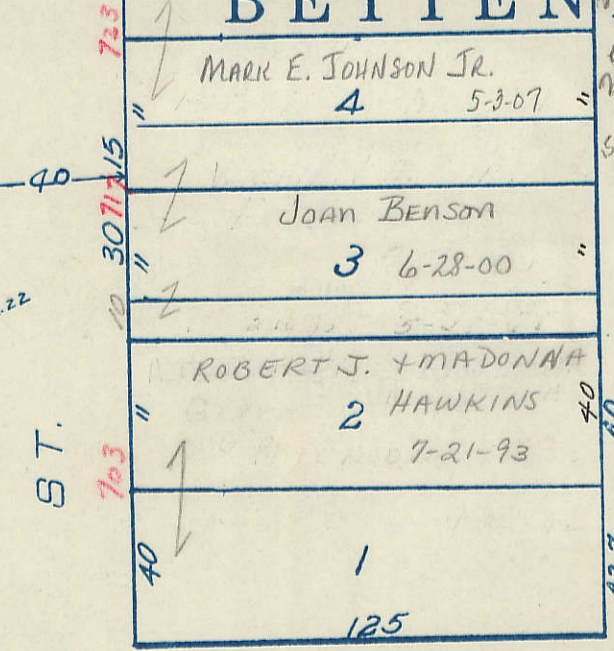


Transfer Page 76

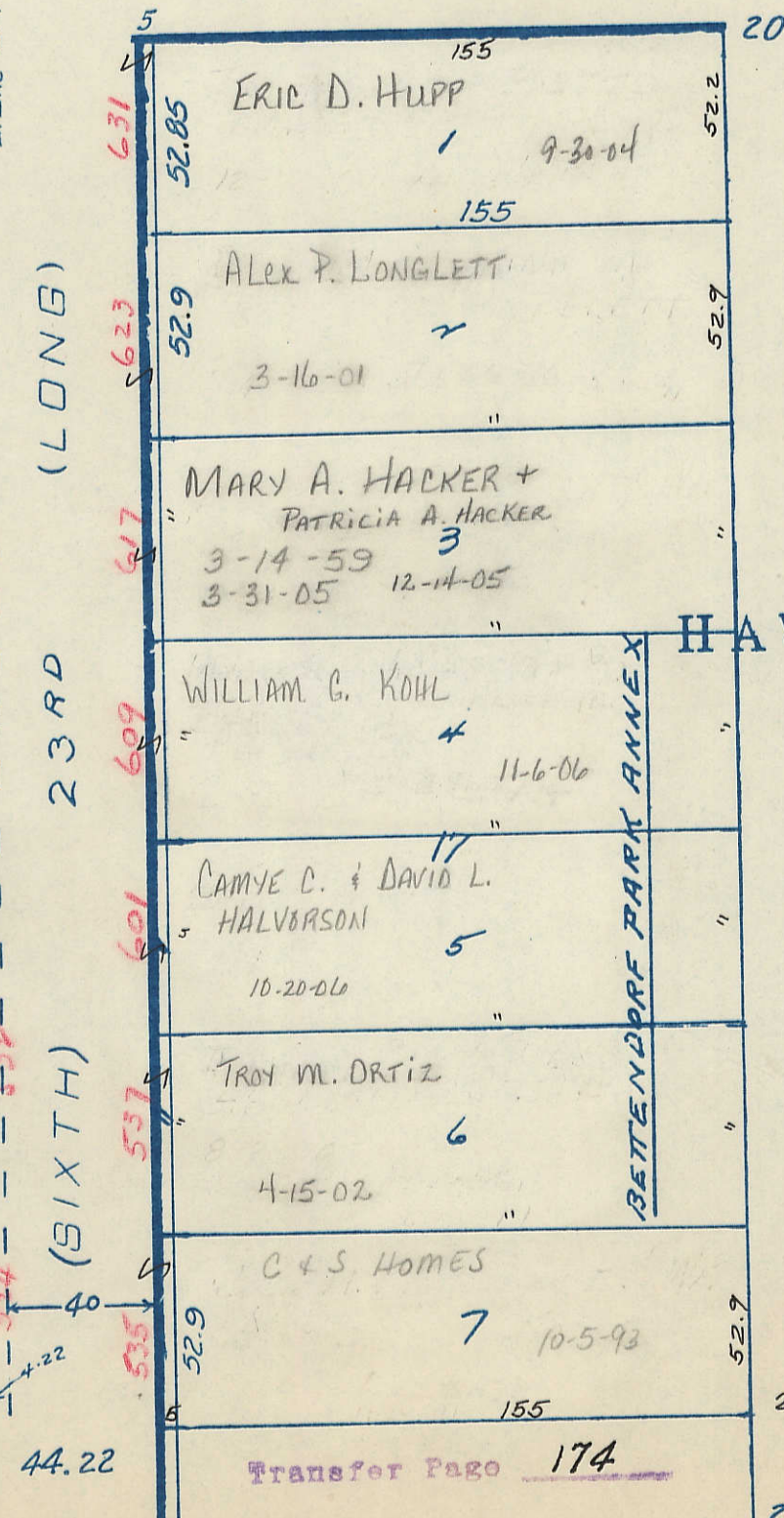


(E) ST.

BETTENDORF PARK ADDITION



40 COLEMAN ST

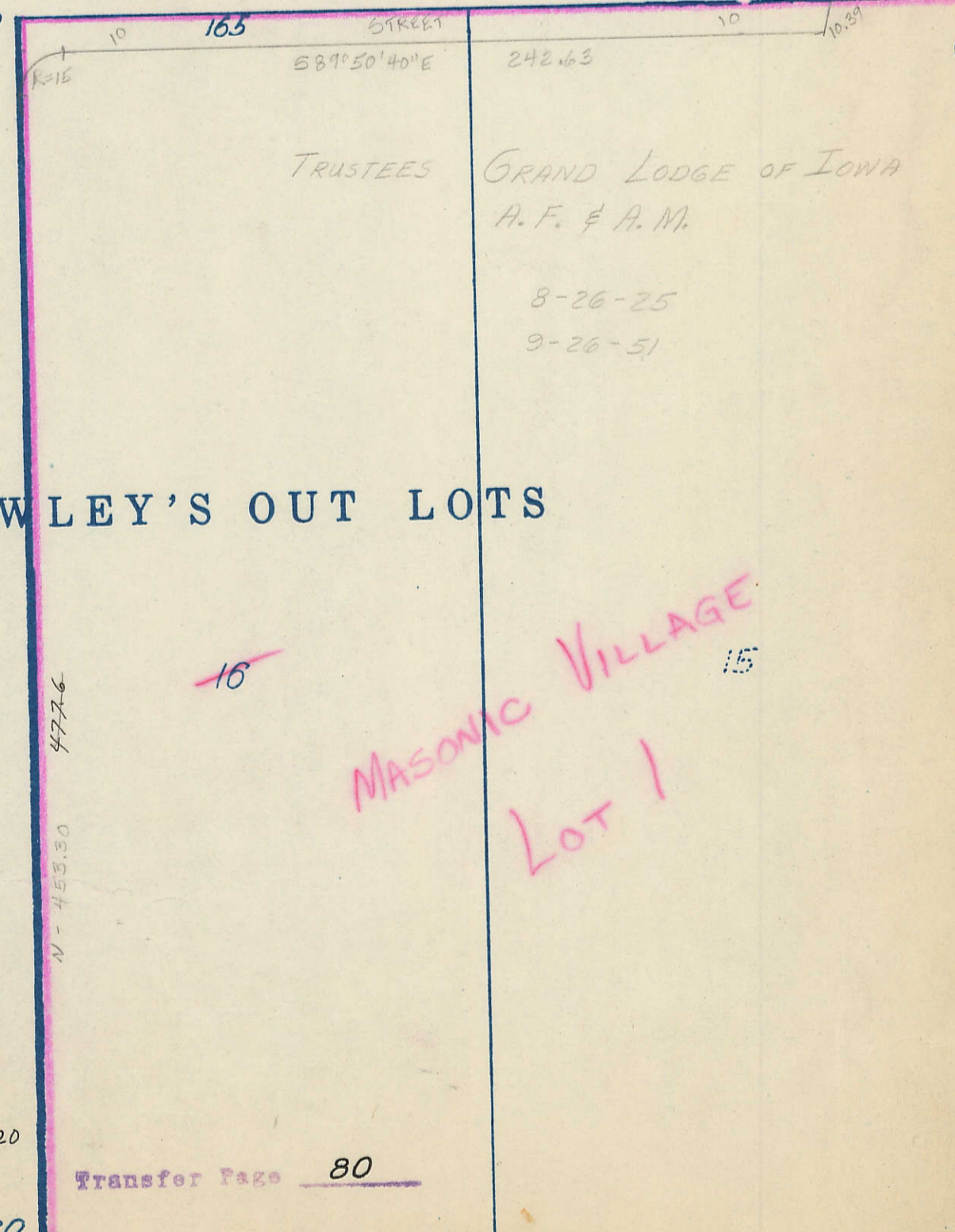


23RD (LONG)

24TH (SIXTH)

Transfer Page 174

HAWLEY'S OUT LOTS



Transfer Page 80

MASONIC VILLAGE
LOT 1