

Transfer Page 218 L.D.S.

17

1012.

1012.

Part Lot 7

WATKIN S' SUB.

THE R.M. KNOX REVOCABLE TRUST

4-30-70  
4-6-87 QCD

THE R.M. KNOX REVOCABLE TRUST

9-25-73  
4-6-87 QCD

Block 13

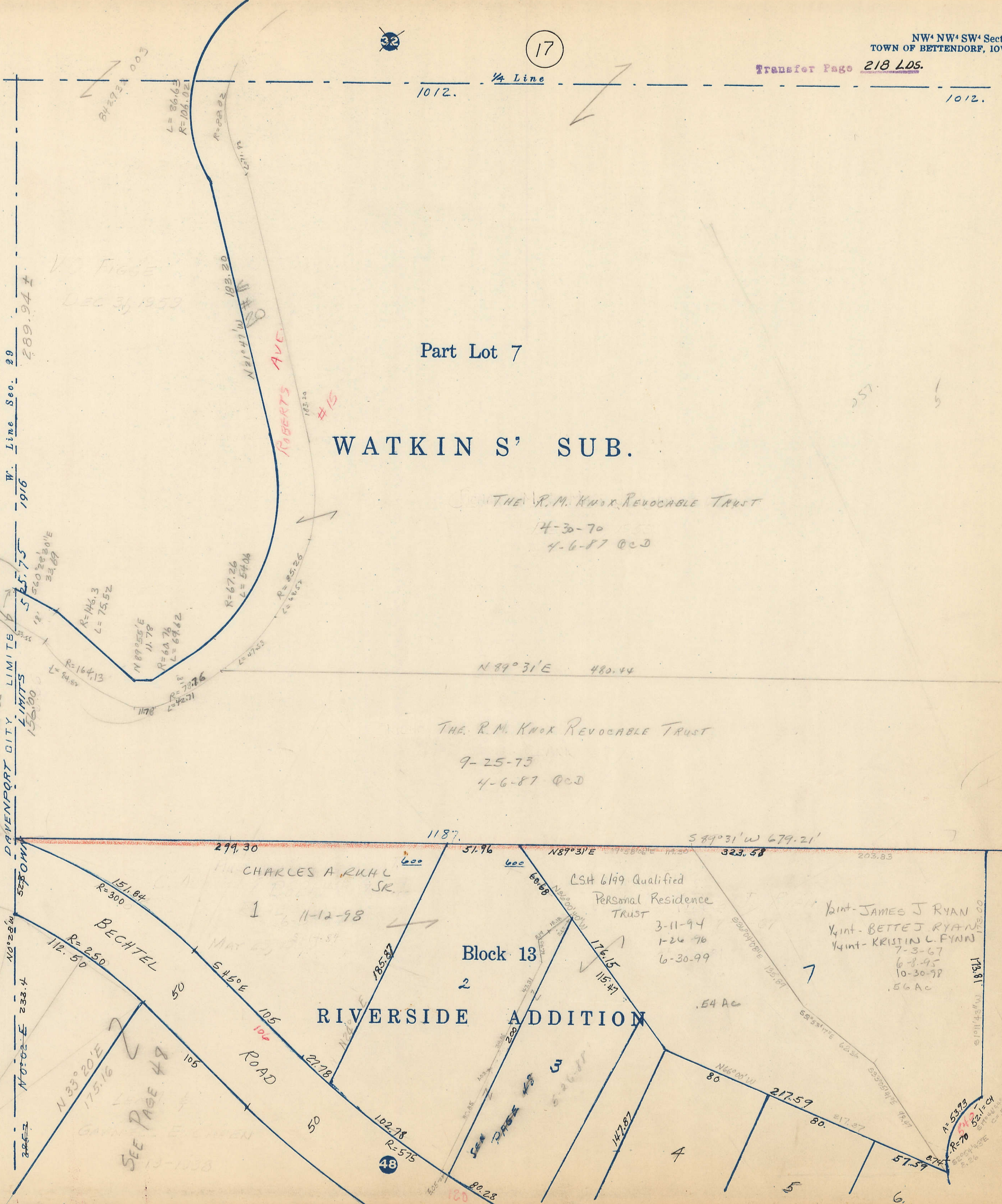
RIVERSIDE ADDITION

CHARLES A. RUKL SR

CSH 6199 Qualified  
Personal Residence  
TRUST

Joint - JAMES J RYAN  
Joint - BETTE J RYAN  
Joint - KRISTIN L. FENN

.54 AC



V.O. FIDGE  
DEC 31, 1953

ROBERTS AVE.

W. Line Sec. 29  
1916

DAVENPORT CITY LIMITS  
156.00

Transfer Page 104

SEE PAGE 49

34