

SECTION 36
TOWNSHIP 80 NORTH, RANGE 2 EAST,
5TH PRINCIPAL MERIDIAN
ALLENS GROVE TOWNSHIP
SCOTT COUNTY, IOWA

TRANSFER PAGE 31

SCALE: 1 INCH = 330 FEET

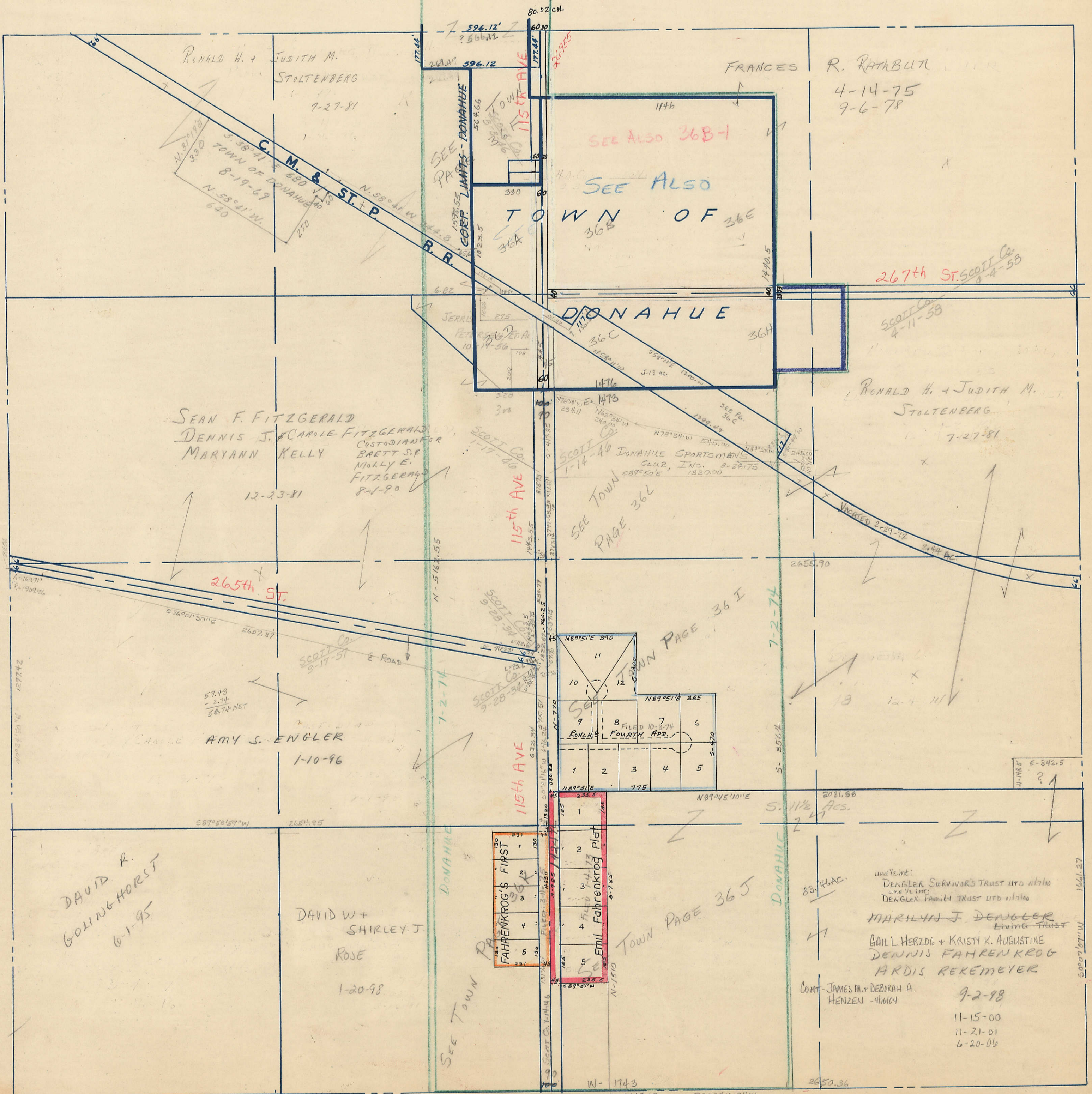
SECTION 25

PAGE 25

370
330
600
566
270
296

SECTION 35
PAGE 35

PAGE WINFIELD TWP.
SECTION 31



SECTION 1

PAGE HICKORY GROVE TWP.