

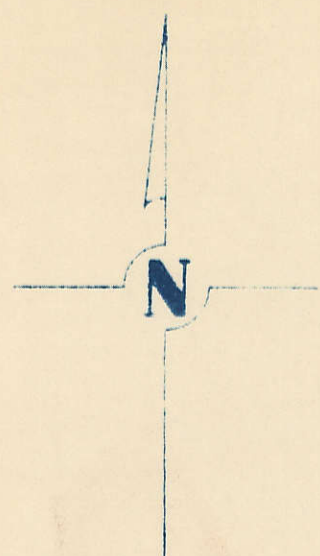
SECTION 35
TOWNSHIP 80 NORTH, RANGE 2 EAST,
5TH PRINCIPAL MERIDIAN
ALLENS GROVE TOWNSHIP
SCOTT COUNTY, IOWA

TRANSFER PAGE 30

SCALE: 1 INCH = 330 FEET

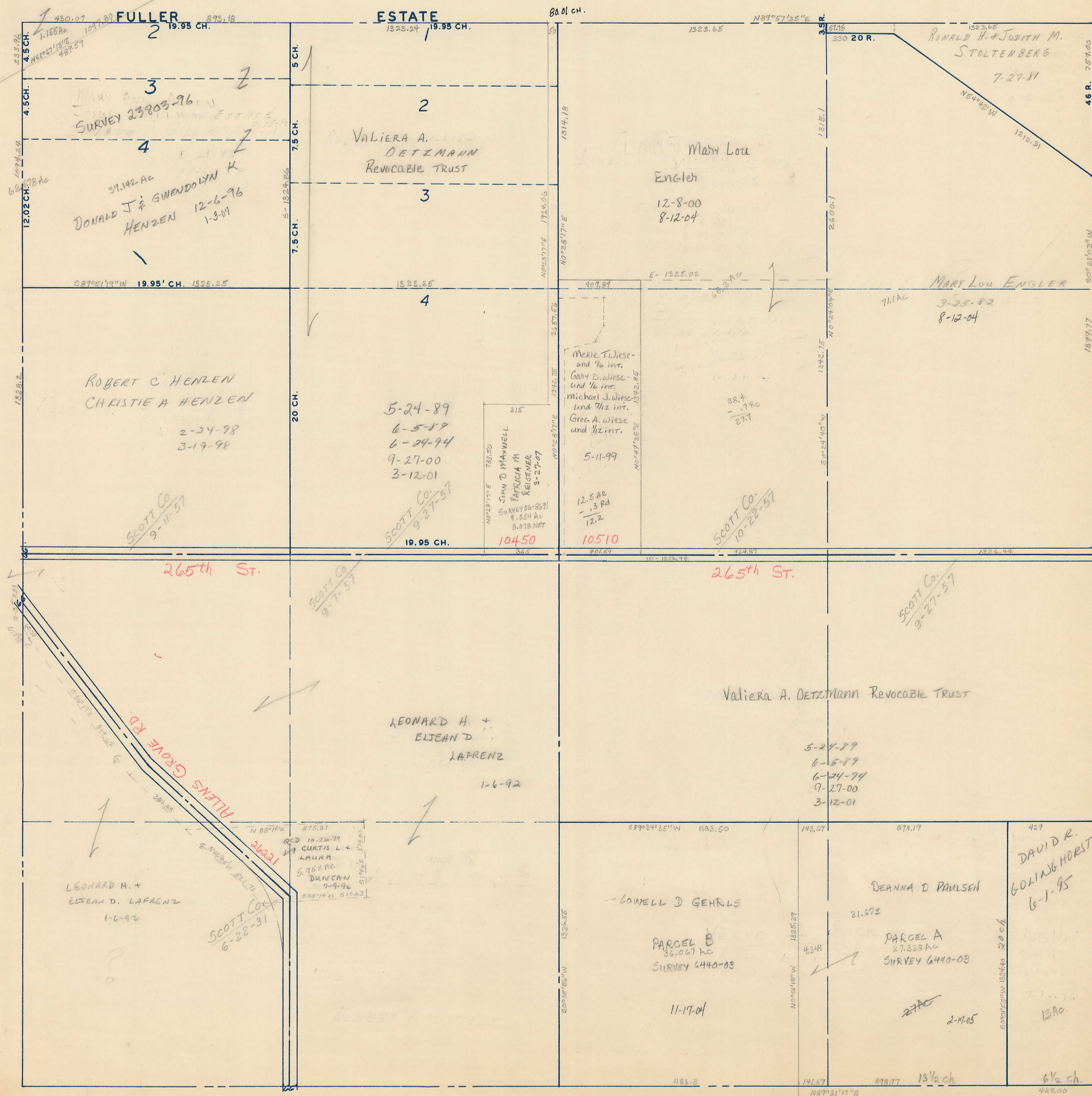
SECTION 26

PAGE 26



SECTION 34
PAGE 34

SECTION 36
PAGE 36



SECTION 2

PAGE HICKORY GROVE TWP.