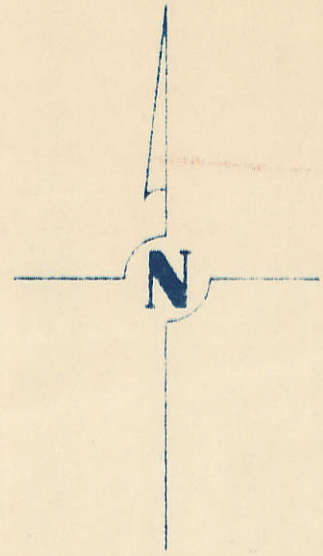


SECTION 34
TOWNSHIP 80 NORTH, RANGE 2 EAST,
5TH PRINCIPAL MERIDIAN
ALLENS GROVE TOWNSHIP
SCOTT COUNTY, IOWA



SCALE: 1 INCH = 330 FEET

TRANSFER PAGE 29

SECTION 27

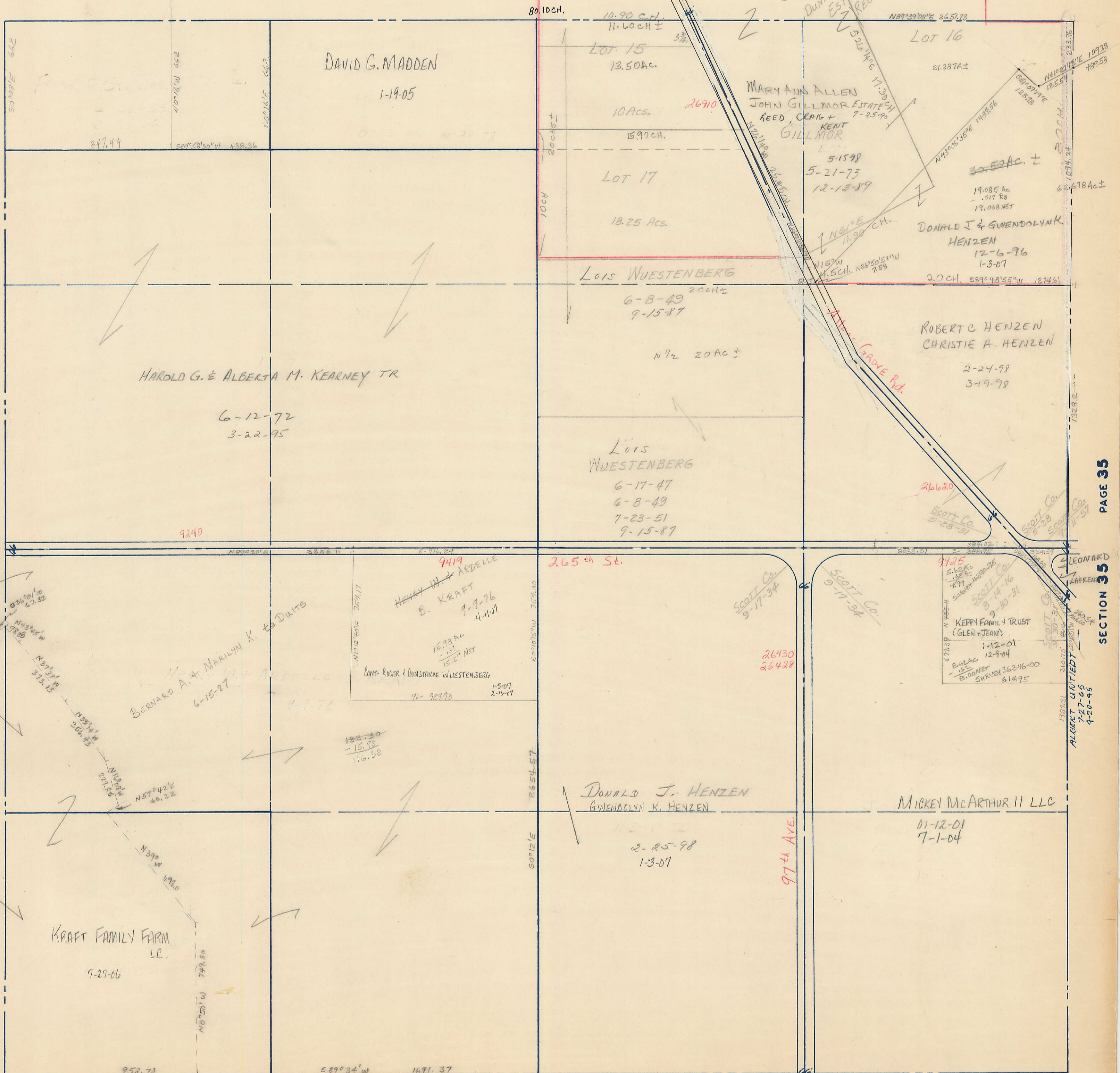
PAGE 27

PAGE 33

SECTION 33

PAGE 35

SECTION 35



SECTION 3

PAGE HICKORY GROVE TWP.