

# SECTION 32

TOWNSHIP 80 NORTH, RANGE 2 EAST,

5<sup>TH</sup> PRINCIPAL MERIDIAN

## ALLENS GROVE TOWNSHIP

SCOTT COUNTY, IOWA

TRANSFER PAGE 27

SCALE : 1 INCH = 330 FEET

SECTION 29

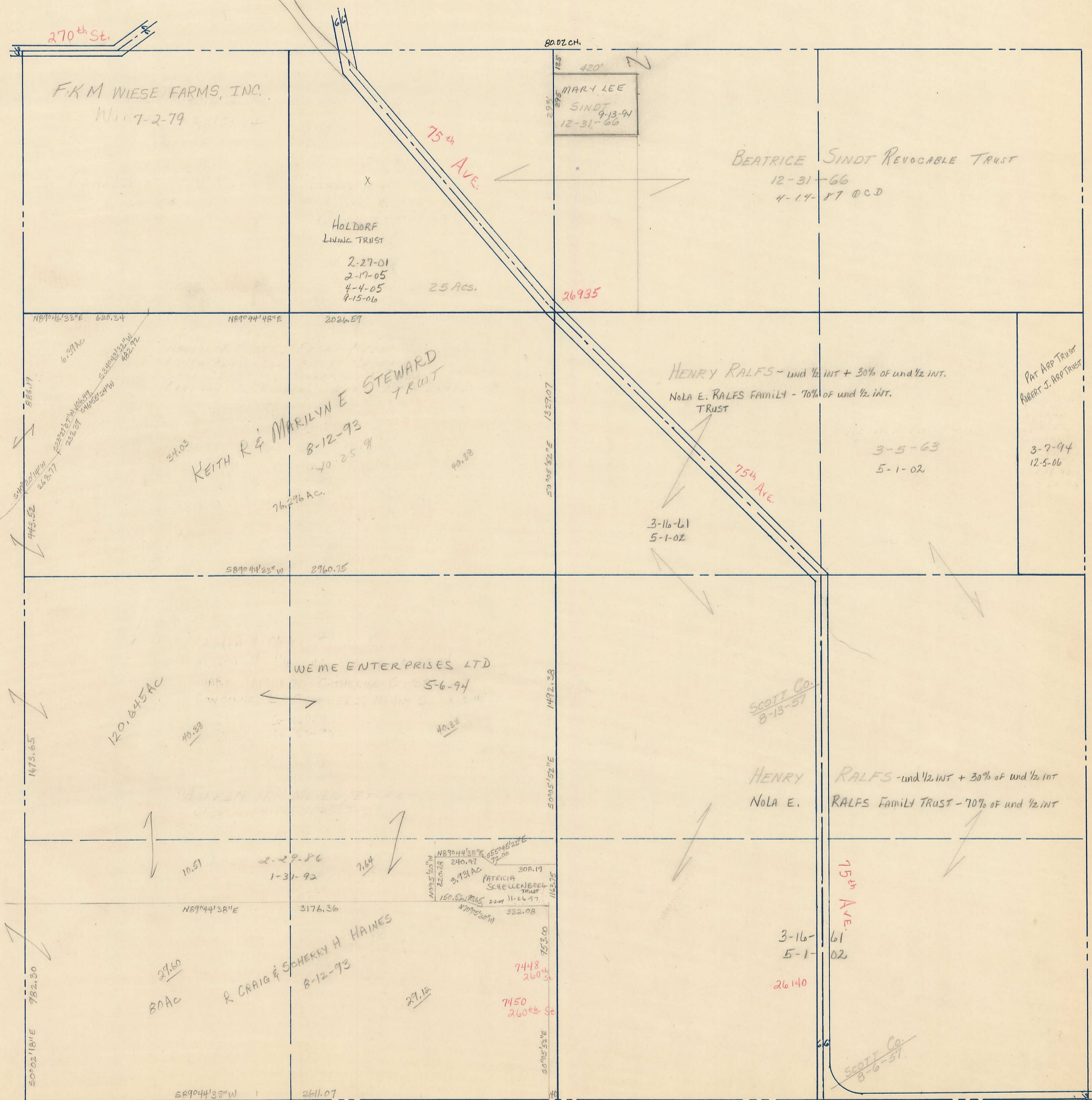
PAGE 29

PAGE 31

SECTION 31

PAGE 33

SECTION 33



SECTION 5

PAGE HICKORY GROVE TWP.

260<sup>th</sup> St.