

# SECTION 28

TOWNSHIP 80 NORTH, RANGE 2 EAST,

5<sup>TH</sup> PRINCIPAL MERIDIAN

## ALLENS GROVE TOWNSHIP

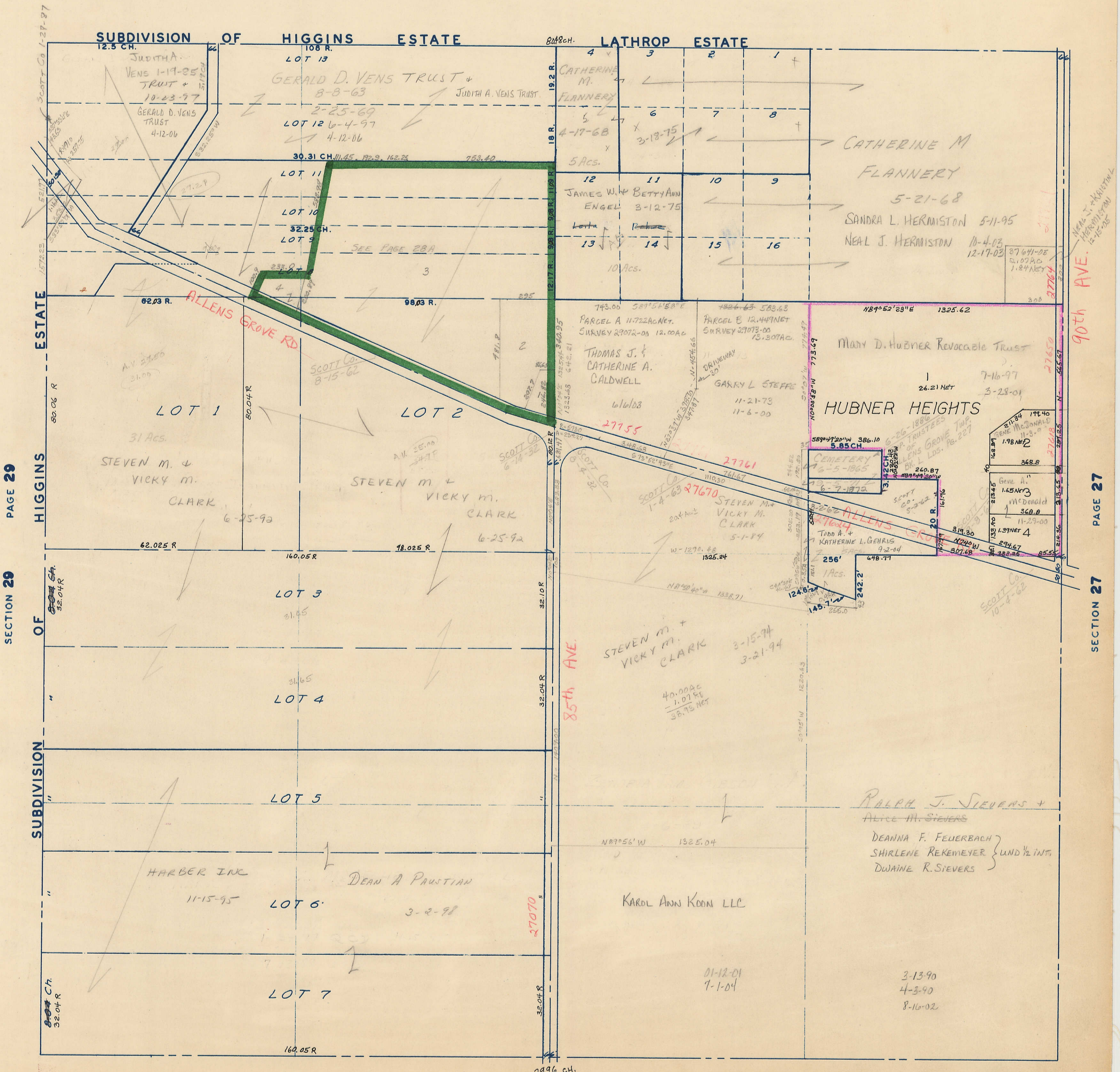
SCOTT COUNTY, IOWA

TRANSFER PAGE 23

SCALE: 1 INCH = 330 FEET

SECTION 21

PAGE 21



SECTION 29 PAGE 29

HIGGINS ESTATE

SUBDIVISION OF

85th AVE.

90th AVE.

SECTION 27 PAGE 27

SECTION 33

PAGE 33



BLANK LOTS: WARREN H. MEYER, TRUSTEE OF A. ROCK MEINTS TRUST  
2-14-79

