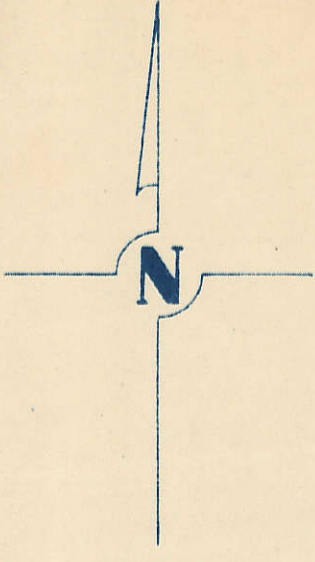


SECTION 16  
TOWNSHIP 80 NORTH, RANGE 2 EAST,  
5<sup>TH</sup> PRINCIPAL MERIDIAN  
ALLENS GROVE TOWNSHIP  
SCOTT COUNTY, IOWA

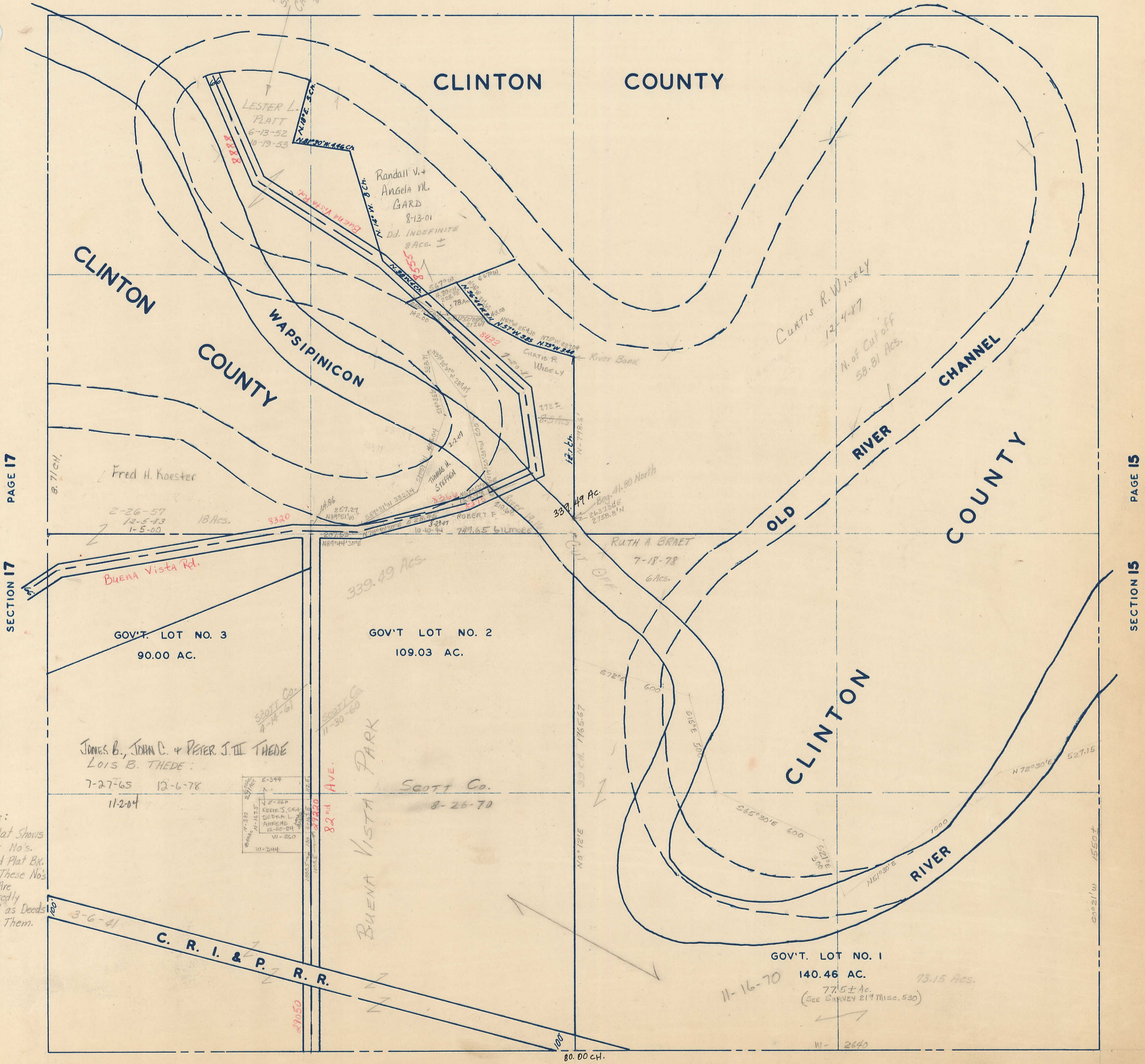
TRANSFER PAGE II



SCALE: 1 INCH = 330 FEET

SECTION PAGE

Assessed to FARMERS  
SAVING BANK  
CALAMUS, IA.  
2-20-28



PAGE 17

SECTION 17

PAGE 15

SECTION 15

Note:  
Gov. Plat Shows  
No Lot No's.  
And Old Plat Bk.  
Shows These No's  
Which Are  
Undoubtedly  
Official as Deeds  
Recite Them.

