

# The W.R.E.N.

Wapsi River Environmental News

FALL 2022

Scott County Conservation Board's Environmental Education Newsletter

[www.scottcountyiowa.com/conservation/wapsi](http://www.scottcountyiowa.com/conservation/wapsi)

 [www.facebook.com/scottcountyconservation](https://www.facebook.com/scottcountyconservation)

The Wapsi River Center is owned, managed and operated by the Scott County Conservation Board

## Wapsi Happenings

By: Director, Dave Murcia

### Seasonal Successes



Friends of the Wapsi Center

*This summer education series was filled with healthy fun in the outdoors including: canoe/kayak experiences, wild edibles, archery, the 4<sup>th</sup> Annual Monarch Festival/ 2<sup>nd</sup> Annual Fun Run. A big thank you to our **Friends of the Wapsi River Center** for all their volunteer support!*

### Friends Awarded LyondellBasell Grant

The Friends of the Wapsi Center have been awarded a Community Grant award of \$2000 from **LyondellBasell** in support of a new **Augmented Reality Interpretive Watershed Educator Topo Box**. The award is in support of educations to improve, restore, and protect watersheds. A big thank you to **Friends** Co-President Julie Ross for writing the grant, and **LyondellBassell** for this award and support of our environmental education and watershed programs.

### Center Improvements

Scott County continues to make improvements at the Center and recent renovations on the old *Owl's Nest Dormitory*. The Phase 1 addition is nearly complete including: the three part basement (classroom space with restroom/kitchenette, archery range, and storage), and the main floor multipurpose room, kitchens, and renovated restrooms. Our General Contractor, **Brus Construction**, brings experience, adaptability, and cooperative ideas while moving forward into each phase. A special thank you to our own **Scott County IT** department for assisting, supporting, and ensuring our technology maintains a strong connection in today's world.

The **St. Ambrose University Menke Observatory** continues renovations, expansions, and improvements in cooperation with the **QC Astronomical Society**. Recent improvements

include: new siding to the original buildings as well as a new access ramp to the classroom. The expansion includes:



a domed scope building and new foundation for a roll-off building has now been completed. The Center is pleased to support and cooperate in the expansion plans including new buildings within the prairie site. Keep looking up!



**Menke Observatory classroom and ramp**

### Fall and Winter Field Experiences

If you would like to **schedule an experience**, we encourage educators/groups to schedule as far in advance as possible, and taking an active role. Our programs are focused on supporting the **Iowa core curriculum**, including **NGSS** and **STEM** elements for Iowa schools and healthy, sustainable lifestyles. Please call (563)328-3286 for more information.

### Bald Eagle Viewing

Bald eagles will start arriving in November along with migrant waterfowl. The stretch of the Wapsi River below the Center supports dozens of eagles in the night roost. The best viewing will be at the Center from December through early March, one to two hours before dusk.

completed a Iowa Governor Stem Externship (<https://iowastem.org/externships>) this summer while serving at the Wapsi River Center. Blaine was exposed to many topics and programs in support of our summer programming with one topic he wanted to take back to his classes and students. Blaine saw a need to expose the delicate balance between native Iowa habitats and our historical and continued practice of agricultural farming. Specific opportunities that Blaine took back to West High included: native habitat plantings (prairie) and a Monarch bio-tent at West High as an outdoor classroom, pollinator health, Monarch lifecycles and conservation career opportunities. A big thank you to Blaine for his interest, dedication, and passion to offer his students insight about natural resources of Iowa.



**Eagle Scout Candidate Logan Fluegel**

### Eagle Scout Project Complete

Troop 203 Eagle Scout Candidate Logan Fluegel, has completed his project for the Wapsi River EE Center with the support of Troop 203 and community partners. Logan planned, constructed, and delivered ten program benches in support of both school and public programming. These benches are ideal for programming throughout our site due to their mobility and size to accommodate program participants. **Thank you Logan Fluegel and family, Troop 203, Scout Leader Sam Miller, Project Coach Jim Varcho, Builders First Choice, Oertel Metal Works !**



**West High Pollinator Bio-tent**

### West High School Educator Serves

West High School Biology teacher, Blaine Parketon,



**Scout Troop 203**

## Be Engaged . . . . In Nature!

In the recent 2022 reports in the *NRPA Engagement with Parks Report* and Member Survey form *Leave No Trace*, it is clear that “people place a high value on the programs and services that park and recreation agencies deliver to their local communities every day and strongly support their mission”. We encourage our communities to honor the truths that are innate and intrinsic to what nature offers in wellness, with the freedom to explore. The key findings in this report include:

- 275 million people in the United States visited a local park or recreation facility at least once during the past year
  - Nearly three in four U.S. residents have at least one local park, playground, open space or recreation center within walking distance of their homes
  - 84 percent U.S. adults seek high-quality parks and recreation when choosing a place to live
  - Nine in 10 people agree that parks and recreation is an important service provided by their local government
- Nearly three in four people agree that equity should in an *extremely* or *very important* goal for their local park and recreation agency

“The public’s strong and broad-based support for parks and recreation solidifies the case made to local political leaders, stakeholders and the media for greater and more sustainable funding for this

essential function.” (2022 *NRPA Engagement with Parks Report*) Please consider exploring natural areas and parks, and keep in mind, these are your public places to not only explore, but keep well, and stay grounded. The new member survey by Leave No Trace, our communities are strongly connected tied to the outdoors, especially when contrasted against national averages.

- 94.4% of Leave No Trace members go hiking, compared to just 19.0% of all Americans
- 82.2% of Leave No Trace members go camping, compared to 15.8% of all Americans
- 39.3% of Leave No Trace members go biking outdoors, compared to 17.3% of all Americans
- 29.9% of Leave No Trace members go fishing, compared to 18.0% of all Americans

Americans have increasingly participated in the outdoors including wild places, natural areas, and parks. Wherever you travel and explore, honor your relationship with our Mother Earth, and remember to *Leave No Trace!*



---

# THANK YOU!

Friends of the Wapsi Center

IADNR

SC Secondary Roads, Brian Burkholder

Partners of Scott County Watersheds

Eagle Scout Logan Fluegel of Troop 203

Eastern Iowa Community College - Brian Ritter

Iowa 4H AmeriCorps

The R.A.R.E. Group, Iowa City

Wallace’s Garden Center

Eldridge Lumber Yard

Girls Scout Camp Liberty

Travis & Anna McCrumb

Jim & Julie Ross

Bill Robbins

Lucia Dryanski

Carol Rogers

Bernadene Bowles

Becky Esbaum

Jolinda Eggers

Joy Sheeley

Linda Puls

Bob Bryant

Susan McPeters

Anne Landaverde

Dan Marshall

River Action

Jim Sautter, Blue Grass

Sarah Vanderwalle and Family



# CALENDAR OF EVENTS

## OCTOBER

**1<sup>st</sup> ~ Fall Ecology Day ~ 1:00 P.M. – 4:00 P.M. ~ Wapsi River Center** ~ Join Wapsi River Center's Environmental Education Staff for a fun afternoon dedicated to the Great Outdoors! All ages welcome at this FREE program. Activities include: *All about Bees* (rescheduled from August 27<sup>th</sup>), a *Woodland I.D. Hike*, and *Leave No Trace—Minimize Campfire Impacts* (special visit by Smokey the Bear). There will be indoor alternatives in case of inclement weather. Weather permitting, stick around the Pine Ring after the event for some added festivities including: cooking fire (you provide your own food/drink), and fun! If you're musically inclined, please feel free to bring an instrument! Registration is limited and required by calling (563)328-3286.



**8<sup>th</sup> ~ Adult Paint Class ~ 1:00 P.M. ~ Wapsi River Center** ~ Join local (Eldridge) artist Julie Wall from the Artist's Vault for a fun sunflower-themed painting lesson at the Wapsi Center. This program is suitable for ages 16 and up. All experience levels welcome! Admission is \$35/person (payable by cash or check at program). Fee covers all supplies, teaching, and cleanup. This program has a minimum requirement of 8 participants to take place. Registration is limited and required by calling (563)328-3286.



**10<sup>th</sup> ~ Story Studio: All About Bats with the Wapsi Center ~ 10:00 A.M. ~ Scott County Library (Eldridge branch)** ~ Listen to a read aloud of *Amara and the Bats* by Emma Reynolds, and then learn all about bats with Naturalists from the Wapsi Center! Plus try experiments and other crafts, too. No registration required. Best for kids in grades K-4<sup>th</sup> and their adults. Call the library with questions (563)285-4794.

**12<sup>th</sup> ~ Scott County Conservation Board; Meeting ~ 3:00 P.M. ~ West Lake Park (Gate # 3)** ~ The Scott County Conservation Board normally meets the second Wednesday of every month at the West Lake Park Headquarters office. **The public and press are**

encouraged to participate virtually due to social distancing challenges. Please call (563)328-3281 for more information.

**13<sup>th</sup> ~ Wapsi River Education Presents: Insects! ~ 4:30 P.M. – 5:30 P.M. ~ River Valley District Library (Port Byron, IL)** ~ Join the Wapsi River Education Center and River Valley District Library as we learn about the creepy crawlies that can be found in your area! Learn about the parts of an insect, the benefits of insects, and even meet a couple of cockroaches! You beetle get over to the River Valley District Library to join in on this buzzz-worthy event! Call the library with questions (309)523-3440.

**15<sup>th</sup> ~ Native Mushroom I.D. and Cultivation ~ 9:00 A.M. – Noon ~ Wapsi River Center** ~ Join Naturalist Becky and guest speaker Nick Buonauro to learn about native Iowa mushrooms and how to cultivate them. During this program, you will learn how to identify native mushrooms, which seasons they can be found, gain a basic understanding on mushroom cultivation, and go on a fall hike to identify mushrooms available during this time. There is no cost for this program. Registration is limited and required by calling (563)328-3286.



**15<sup>th</sup> ~ Skulls & Bones! ~ 1:00 P.M. ~ Wapsi River Center** ~ Join Iowa AmeriCorps Educator Emma and celebrate the spooky season! Learn all about bones and how to identify different skulls. This program is free and is open to all ages! Registration is limited and required by calling (563)328-3286.



**20<sup>th</sup> ~ Homeschool Days ~ 10:30 A.M. to 2:30 P.M. ~ Wapsi River Center** ~ Once a month the Wapsi River EE Center will be hosting a day just for homeschoolers! Join us for programming led by our Naturalists! The goal of this series is to immerse children in the natural world and help them experience seasonal phenomena in a hands-on way. Most appropriate for K-6<sup>th</sup> grades, though all ages welcome. Suggested donation of \$1/student. Please come prepared for the weather because much of the planned programming will take place outdoors. Bring a lunch if you like. Registration is limited and required by calling (563)328-3286. Registration opens the first of each month.

**20<sup>th</sup> ~ Friends of the Wapsi Center Meeting ~ 6:30 P.M. ~ Wapsi River Center & Virtually ~** Come learn about the current happenings at the Wapsi River Center. Please call if you are interested in attending (563)328-3286.

**22<sup>nd</sup> ~ Zombie Archery ~ 1:00 P.M. ~ Wapsi River Center ~** Learn how to use a bow and arrow in this Halloween themed, informative, and fun hands-on



class. You'll learn safety and proper archery techniques according to National Archery in the Schools Program (NASP) guidelines. Children must be in the 4<sup>th</sup> grade and above to participate and accompanied by an adult. Adults are welcome to participate as well! Your target will be Zombies! This program is free and weather permitting. Park in Parking Lot A and

meet at the observatory. Registration is limited and required by calling (563)328-3286.

**22<sup>nd</sup> ~ The Great Atlatl Pumpkin Hunt ~ 3:00 P.M. ~ Wapsi River Center ~** Join Naturalist Mike for a

chance to hunt with an atlatl, a primitive hunting weapon originally used to hunt mastodon and bison. Large target pumpkins and real pumpkins will be set out as targets. Fun for the whole family and outdoor enthusiasts alike!!!

Registration is limited and required by calling (563)328-3286.



**22<sup>nd</sup> ~ Halloween Hike ~ 6:30 P.M. ~ Wapsi River Center ~** Join Naturalist Mike for an educational

adventure to learn about mysterious and misunderstood animals. At 5:00 P.M. there will be an open fire for grilling. Please bring your own food items and we will provide the fire and roasting sticks! The hike will begin at 6:30 P.M. with a spooky scavenger hunt

afterwards. Please bring a flashlight! Family fun for everyone. Registration is limited and required by calling (563)328-3286.



**22<sup>nd</sup> ~ Menke Star Party ~ Dusk ~ Wapsi River Center ~ Monsignor Menke Observatory (Wapsi River Center) ~** Join Dr. Mitchell, Director of the Monsignor Menke Observatory for a tour of the night sky. Please call (563)333-6141 on the day of this event to find out if weather conditions will permit viewing.

**31<sup>st</sup> ~ Happy Halloween!**

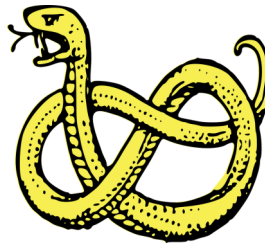
## NOVEMBER

**5<sup>th</sup> ~ Turtles and Tie Dye ~ 10:00 A.M. ~ Wapsi River Center ~** Join Iowa 4H AmeriCorps Educator Megan to meet and learn about different Wapsi River Center turtles, and have fun creating your own tie-dye creation! Please bring your own material to tie-dye, and we will provide the dye for you. Registration is limited and required by calling (563)328-3286.

**7<sup>th</sup> ~ Story Studio: Misunderstood Animals with the Wapsi Center ~ 10:00 A.M. ~ Scott County Library System (Eldridge Branch) ~** Listen to a read aloud and then learn all about mysterious and misunderstood animals like snakes, possums, and skunks with Naturalists from the Wapsi Center. There might even be a real animal to meet! No registration required. Best for kids in grades K-4<sup>th</sup> and their adults. Call the library with questions (563)285-4794.



**8<sup>th</sup> ~ Misunderstood Animals with the Wapsi Center ~ 4:00 P.M. ~ Scott County Library System (Buffalo Branch) ~** Come learn all about mysterious and misunderstood animals like snakes, possums, and skunks with Naturalist from the Wapsi Center. There might even be a real animal to meet! No registration required. Best for kids in grades K-4<sup>th</sup> and their adults. Call the library with questions (563)285-4794 extension 3.



**9<sup>th</sup> ~ Scott County Conservation Board; Meeting ~ 3:00 P.M. ~ West Lake Park (Gate # 3) ~** The Scott County Conservation Board normally meets the second Wednesday of every month at the West Lake Park Headquarters office. **The public and press are encouraged to participate virtually due to social distancing challenges.** Please call (563)328-3281 for more information.

**11<sup>th</sup> ~ HOLIDAY ~ County offices will be closed in observance of the Holiday.**

**17<sup>th</sup> ~ Homeschool Days ~ 10:30 A.M. to 2:30 P.M. ~ Wapsi River Center ~** Once a month the Wapsi River EE Center will be hosting a day just for homeschoolers! Join us for programming led by our Naturalists! The goal of this series is to immerse children in the natural world and help them experience

seasonal phenomena in a hands-on way. Most appropriate for K-6th grades, though all ages welcome. Suggested donation of \$1/student. Please come prepared for the weather because much of the planned programming will take place outdoors. Bring a lunch if you like. Registration is limited and required by calling (563)328-3286. Registration opens the first of each month.

**17<sup>th</sup> ~ Friends of the Wapsi Center Meeting ~ 6:30 P.M. ~ Wapsi River Center & Virtually** ~ Come learn about the current happenings at the Wapsi River Center. Please call if you are interested in attending (563)328-3286.

**18<sup>th</sup> ~ Night Time Adventures ~ 5:30 P.M. ~ Wapsi River**

**Center** ~ While night time can be dark and spooky, there are some really cool critters that lurk in the shadows! Come join Iowa 4H AmeriCorps Educator Megan and learn about how nocturnal animals use their senses to navigate in the dark, and be able to test your skills along the way in this interactive night hike. It may be chilly, so please plan to dress accordingly! Registration is limited and required by calling (563) 328-3286.



**19<sup>th</sup> ~ DIY Leaf Coasters & Tree Hike ~ 10:00 A.M. ~ Wapsi River Center**

~ Join *Friends of the Wapsi Center* member Susan McPeters in making DIY leaf coasters using native fall leaves and ceramic tiles. This activity is for all ages. While the coasters are drying, participants will go on a naturalist led fall tree hike. Each kit includes 2 coasters. The cost is \$5.00 per kit, payable by cash or check at the program. Registration is limited and required by calling (563)328-3286.

**19<sup>th</sup> ~ Harvest Wreath Workshop ~ 1:00 P.M. ~ Wapsi River Center**

~ Join Naturalist Mike to create a harvest wreath. Participants will create a grapevine base and then decorate it with seeds, pods, corn husks and cobs. Wreath kits are \$5.00 each. Participants may bring items to decorate and/or share. Registration is limited and required by calling (563)328-3286 to register for this program.



**19<sup>th</sup> ~ Songs of the Earth ~ 1:30 P.M. ~ Wapsi River Center** ~ Join *Friends of the Wapsi Center* member

Lucia Dryanski and the *Quad-Cities Community Sing Group* for a sharing of songs about the seasons, elements and cosmos. All songs are taught, and NO singing ability or experience is necessary. Weather permitting, we will meet outside around a warm fire near Redtail; dress accordingly--layers highly recommended !!! In case of inclement weather, we will meet indoors, as socially distanced as possible. Bring a comfy chair (some benches available) and something to sip on.

Please call (563)328-3286 to register for this program.



**24<sup>th</sup> & 25<sup>th</sup> ~ HOLIDAY ~ County offices will be closed in observance of the Holiday.**

**27<sup>th</sup> ~ Pioneer Village Annual X-mas Walk ~ Noon - 4:00 P.M.** ~ Visit Santa and take your own photos, kids can make Christmas crafts, write letter to Santa or make reindeer food, listen to Old Time Christmas music in the church, buy chili, cookies, hot drinks and unique gifts, watch blacksmithing and enjoy Christmas decorations throughout the Village. Admission is the donation of pet supply item(s) or \$\$\$ that will be distributed to Down by the Creek Companion Animal Sanctuary. Please call (563)328-3283 for more details.

## DECEMBER

**3<sup>rd</sup> ~ Crafting for Conservation: Holiday Edition ~ 10:00 A.M. ~ Wapsi River Center** ~ Come join naturalists at this FREE program to get ready for the holiday season! We will learn how to repurpose and upcycle common

household items into new wrapping, just in time for the holidays. Crafts will include calendar gift bags, magazine bows, and pinecone crafts. Homemade tea will also be available to sample while you craft! The tea was sourced from the Wapsi River Center's own wild ingredients (and the recipes would make an excellent gift!) Registration is limited and required by calling (563)328-3286.



**14<sup>th</sup> ~ Scott County Conservation Board; Meeting ~ 3:00 P.M. ~ West Lake Park (Gate # 3) ~** The Scott County Conservation Board normally meets the second Wednesday of every month at the West Lake Park Headquarters office. **The public and press are encouraged to participate virtually due to social distancing challenges.** Please call (563)328-3281 for more information.

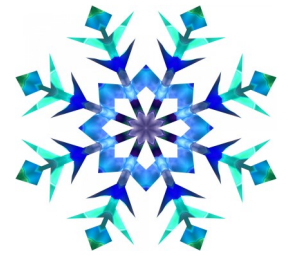
**15<sup>th</sup> ~ Homeschool Days ~ 10:30 A.M. to 2:30 P.M. ~ Wapsi River Center ~** Once a month the Wapsi River EE Center will be hosting a day just for homeschoolers! Join us for programming led by our Naturalists! The goal of this series is to immerse children in the natural world and help them experience seasonal phenomena in a hands-on way. Most appropriate for K-6th grades, though all ages welcome. Suggested donation of \$1/

student. Please come prepared for the weather because much of the planned programming will take place outdoors. Bring a lunch if you like. Registration is limited and required by calling (563)328-3286. Registration opens the first of each month. Please look to 2023 for future dates.

**23<sup>rd</sup> & 26<sup>th</sup> ~ HOLIDAY ~ County offices will be closed in observance of the Holiday.**

## **JANUARY 2023**

**2<sup>nd</sup> ~ HOLIDAY ~ County offices will be closed in observance of the Holiday.**



# Leave No Trace **SEVEN PRINCIPLES**

1. Stick To Trails and Camp Overnight Right
2. Leave It As You Find It
3. Keep Wildlife Wild
4. Know Before You Go
5. Trash Your Trash and Pick Up Poop
6. Be Careful With Fire
7. Share Our Trails and Manage Your Pet

# PLANT PROFILE: NEW ENGLAND ASTER

By Emma Jacobs, Iowa AmeriCorps Environmental Education Member

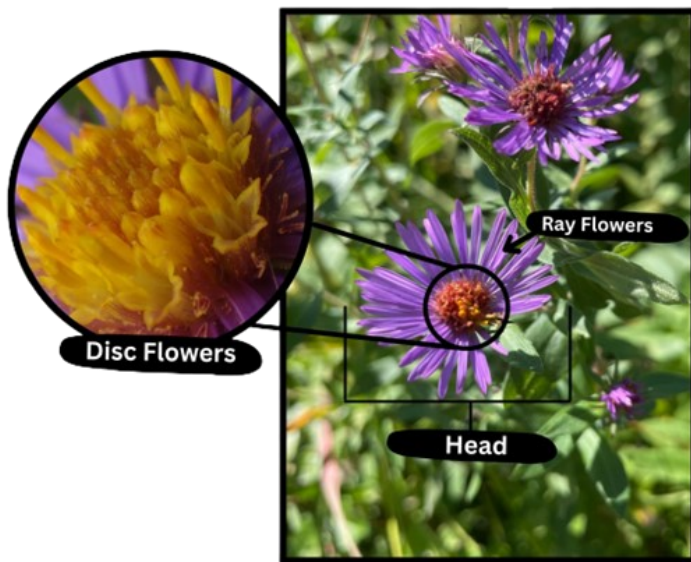
Autumn is filled with hues of red, orange, and yellow from the falling leaves with a hint of white and purple from late blooming flowers. The beautifully



New England Aster;  
Emma Jacobs

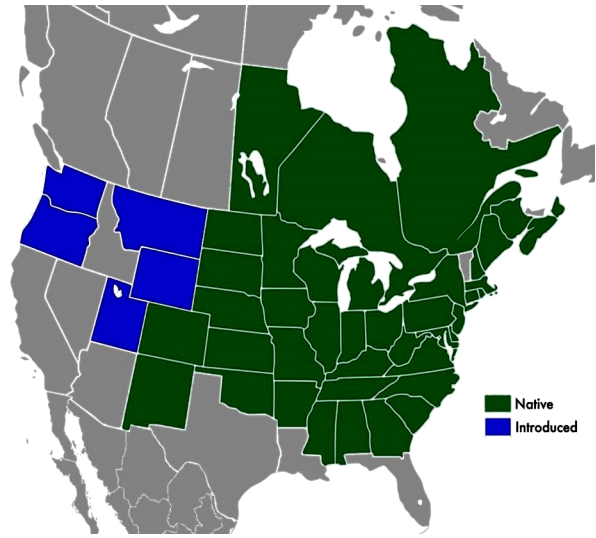
vibrant purple petals belong to the New England Aster (*Symphyotrichum novae-angliae*). The *Symphyotrichum* genus is home to over 100 species and naturally occurring hybrids in the *Asteraceae* family. The *Asteraceae* family is also home to other popular plants including daisies and sunflowers.

The *Asteraceae* family was previously known as the *Compositae* family. This name came from the composite structure of their flowers. The flowers in this family are unique due to the fact that they appear to be one singular flower, but are actually composed of a cluster of many smaller flowers. The “petals” or “sun rays” are actually individual flowers known as **ray flowers**, and the inner “disk” is made up of much smaller individual flowers known as **disc flowers**. The



cluster of flowers that appears to be one large flower is referred to as the **head**, which will rotate to follow the sun to catch as much sun as it can.

New England Asters are native to northeastern and central United States and southeastern Canada.



New England Aster Range Map; Wikipedia

This widespread plant can be found in many different habitats including meadows, prairies, marshes, forest edges, and disturbed sites such as roadsides and former farm fields. New England Asters are perennial wildflowers that can reach heights of 4 feet and bloom from August to October, making it a vital late season food source for various pollinators! Its pollinators include a wide variety of nectar-feeding insects such as butterflies, moths, ants, flies, and various species of bees. They are more often visited by long-tongued bumblebee species such as the Golden Northern Bumblebee (*Bombus fervidus*) and the Half-Black Bumblebee (*Bombus vagans*).

Historically, this plant has been used by many Indigenous people in North America. The Cherokee used the roots to make a poultice, a direct application of crushed fresh herbs to the skin, to treat pain, and used an infusion of the plant to treat fevers. Both the Meskwaki, through smudging, and Potawatomi, through fumigation, used the plant to revive people. The Iroquois used the plant to treat “weak skin” and fevers, and they even used it as a love medicine! The Mohawk and Iroquois have used the plant to treat mothers with intestinal fevers, or morning sickness. Finally, the Chippewa smoked the roots in pipes to attract game animals. Today, the plant is used to treat contact dermatitis, or rashes, that are caused by poison ivy and poison sumac! So next time you are out walking the prairie or driving down the road on a beautiful fall day, be on the lookout for the deep purple petals of the New England Aster.



# ANIMAL PROFILE: ANTLION

By Naturalist Michael J. Granger

Let me introduce to you an amazing insect that could be near you. Up at our one of our buildings I noticed several little mysterious cone shaped holes in the soft sandy ground around the building. Upon closer inspection I noticed small ants and crickets



Antlion pit trap;  
Photo: Michael J. Granger

walking around the small sand pits. Suddenly one of the ants fell into a pit and tried desperately to get out. Then a small pair of jaws reached out of the bottom of the pit and grabbed the ant! The ant was captured by a creature hidden at the bottom of the pit. Upon further research the pits

turned out to be made by an interesting insect known as the Antlion.

To begin our discussion of the antlion we need a quick insect refresher. First of all insects are the most numerous creatures on planet earth, representing represent half of all known living organisms. They are the most diverse group of animals, and there are a million species already described, with numerous species surely to be discovered. Insects are the largest group of creatures in the phylum Arthropoda. The word arthropod means “jointed leg” referring to an insects outer skeleton or exoskeleton. Other arthropods include the spiders, crustaceans, millipedes and centipedes. Insects are well known for having 3 body parts, six legs, compound eyes, and antennae. Finally insects undergo metamorphosis or a change in form throughout their life cycle. The important roles insects play in ecosystems are vast and include pollination, decomposition, pest control, and silk and honey production just to name a few.

Back to the amazing antlion. The antlions are a group of about 2,000 species of insect in the neuropteran family Myrmeleontidae. They are named for their predatory behavior which involves their larva digging pits in soft sand or soil in areas that are protected from rain. The pits catch unwary insects who are funneled to the bottom where the larval antlion awaits. Within a few minutes of seizing its prey with its jaws and injecting it with venom and enzymes the antlion it begins to suck out the digested insides. If you find a lot of antlion funnel traps in an area it is a sign of a good population of potential prey species. A nickname for the antlion is “Doodlebug” which refers

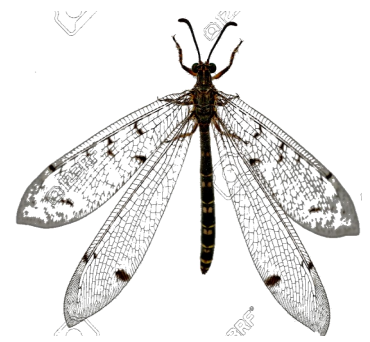
to the winding trails that may be found in the soft sand, made by antlion larva.

An antlion larva is a sight to behold. Even though they are not large they are fierce and look like a creature from a science fiction film! Larval antlions are oval, plump, flattened, soft-bodied, with segmented abdomens and 6 legs. They are mottled and dirt-colored, often with bristles. The head is flattened and bears a pair of large, sickle like pincers that often have spines. The pincers are harmless to humans but are deadly to unsuspecting prey.



Antlion Larva;  
Photo: Paige Owings

In the fall, when an antlion larva has matured it forms a cocoon with silk and sand particles and pupates. The pupa may be several inches underground, and takes a month to mature into the adult. The adult antlion looks very much like a small dragon fly. The adult insects are less well known due to their relatively short lifespans compared to the larvae. Adults, sometimes known as antlion lacewings, mostly fly at dusk or after dark and may be mistakenly identified as dragonflies or damselflies. The adult can be distinguished from a damselfly by its clubbed antennae and the fact that they primarily fly at dusk or at night, whereas, dragonflies are active only during the day. Adult antlion lacewings search out mates and eventually the female will deposit eggs in a suitable area to continue the antlion’s life cycle. Antlion cocoons containing antlion pupa will overwinter underground and emerge as adults the following warm season.



Antlion Lacewing;  
Google Images

Finally our mystery has been unraveled. Next time you find an area that is sandy or fine soil and is protected from rain see if you might find some antlion traps and spend some time watching these amazing creatures in action.

WAPSI RIVER E. E. CENTER  
31555 52ND AVENUE  
DIXON, IA 52745  
Tel: (563) 328-3286

RETURN SERVICE REQUESTED



“The W.R.E.N.” is published quarterly by the Wapsi River Environmental Education Center and the Scott County Conservation Board.”

**Mailing List:** Receive a copy of the WREN free of charge by sending a postcard to the address above.

### Scott County Conservation Board

Members:

Rich Mohr	Doug Grenier
John “Skip” O’Donnell	Beth McAleer
Carol Fennelly	

Director:

Roger Kean

### Phone Numbers

Wapsi River Environmental Education Center  
(563) 328-3286  
Scott County Conservation Board  
(563) 328-3280

### Wapsi River Environmental Education Center Staff

Dave Murcia, Director/Naturalist  
Mike Granger, Naturalist  
Becky Baugh, Naturalist  
Paige Owings, Assistant Seasonal Naturalist  
Resident Caretaker, Christine Hultquist  
Megan Fahrenkrug, Iowa AmeriCorps  
Environmental Education Member  
Emma Jacobs, Iowa AmeriCorps  
Environmental Education Member



The Scott County Conservation Board in the provision of services and facilities to the public does not discriminate against anyone on the basis of race, color, sex, creed, national origin, age or handicap. If anyone believes they have been subject to discrimination, they may file a complaint alleging discrimination with either the Scott County Conservation Board or the Office of Equal Opportunity, U.S. Department of Interior, Washington D.C. 20240.